

Weekly Brief (Apr. 18 – 22, 2022)

Summary:

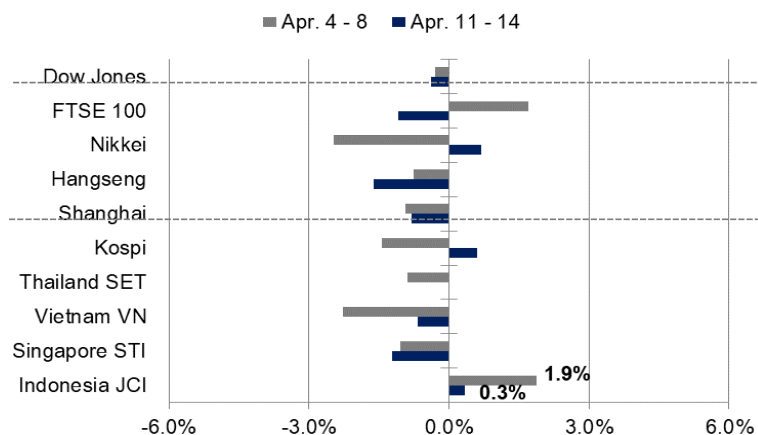
Last week review: Inflasi AS tertinggi sejak tahun 1981, dan spekulasi kenaikan FFR 150 bps, mewarnai pergerakan IHSG sepekan terakhir. IHSG sentuh all time high di level 7.354, kemudian tertekan ke level 7.147, seiring lonjakan inflasi AS per Maret yang mencapai 8,5%, memicu kecemasan seputar resesi. Namun, keyakinan investor bahwa inflasi AS Maret ini, sudah mencapai puncaknya, sebelum kebijakan moneter agresif the Fed, membuat IHSG ditutup naik 0,3% secara mingguan ke level 7.235. Investor mencermati spekulasi kenaikan FFR sebesar 50 bps, pada bulan Mei, Juni, dan Juli mendatang.

This week's outlook: Investor menantikan rilis data BI 7-DRRR periode April, yang diproyeksikan tetap bertahan dilevel terendahnya, atau di level 3,50%. Pelaku pasar mencermati sikap BI, yang hanya akan menaikkan BI 7-DRRR apabila terjadi kenaikan inflasi yang bersifat fundamental, dimana indikatornya adalah kenaikan inflasi inti. Di sisi lain, NHKSI Research memproyeksikan IHSG pekan ini bergerak dalam rentang kisaran 7.200 hingga 7.500.

JCI Index	: 7,235.53 (+0.3%)
Foreign Flow	: Net buy of IDR 3.88 trillion (vs. last week's net buy of IDR 4.19 trillion)
USD/IDR	: 14,344 (-0.13%)

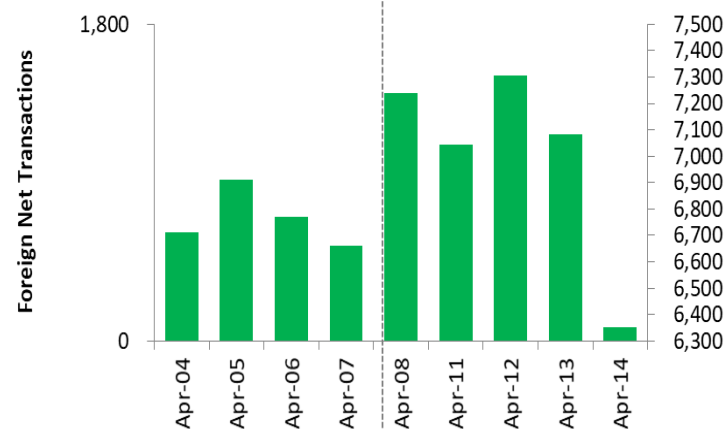
Last Week's JCI Movement

Global Market Movement



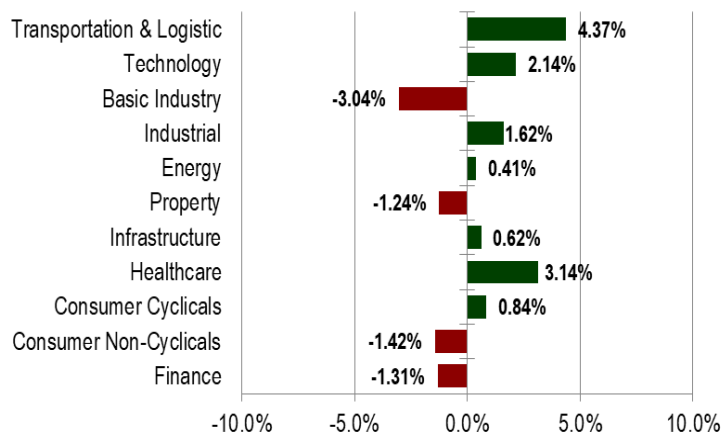
Source: Bloomberg, NHKSI Research

Foreign Net Flow – Last 10 Days



Source: Bloomberg, NHKSI Research

JCI Sector Movement



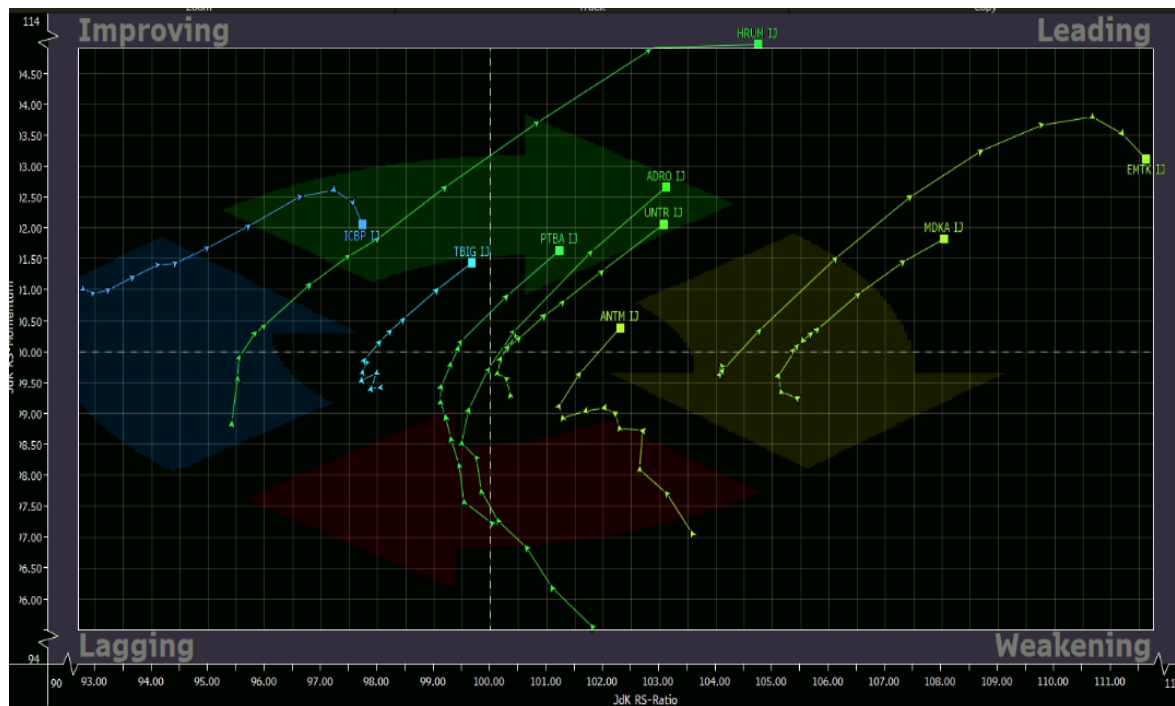
Source: Bloomberg, NHKSI Research

JCI's Top Foreign Transaction

Top Buy (RG)	NB Val. (IDR Mn)	Top Sell (RG)	NS Value (IDR Mn)
TLKM	1,177,454	DOID	68,146
GOTO	396,530	BRMS	53,643
ASII	247,385	ESSA	45,080
BBRI	204,880	BMRI	45,030
BBNI	191,211	UNVR	26,940

Source: Bloomberg, NHKSI Research

Stocks Recommendation

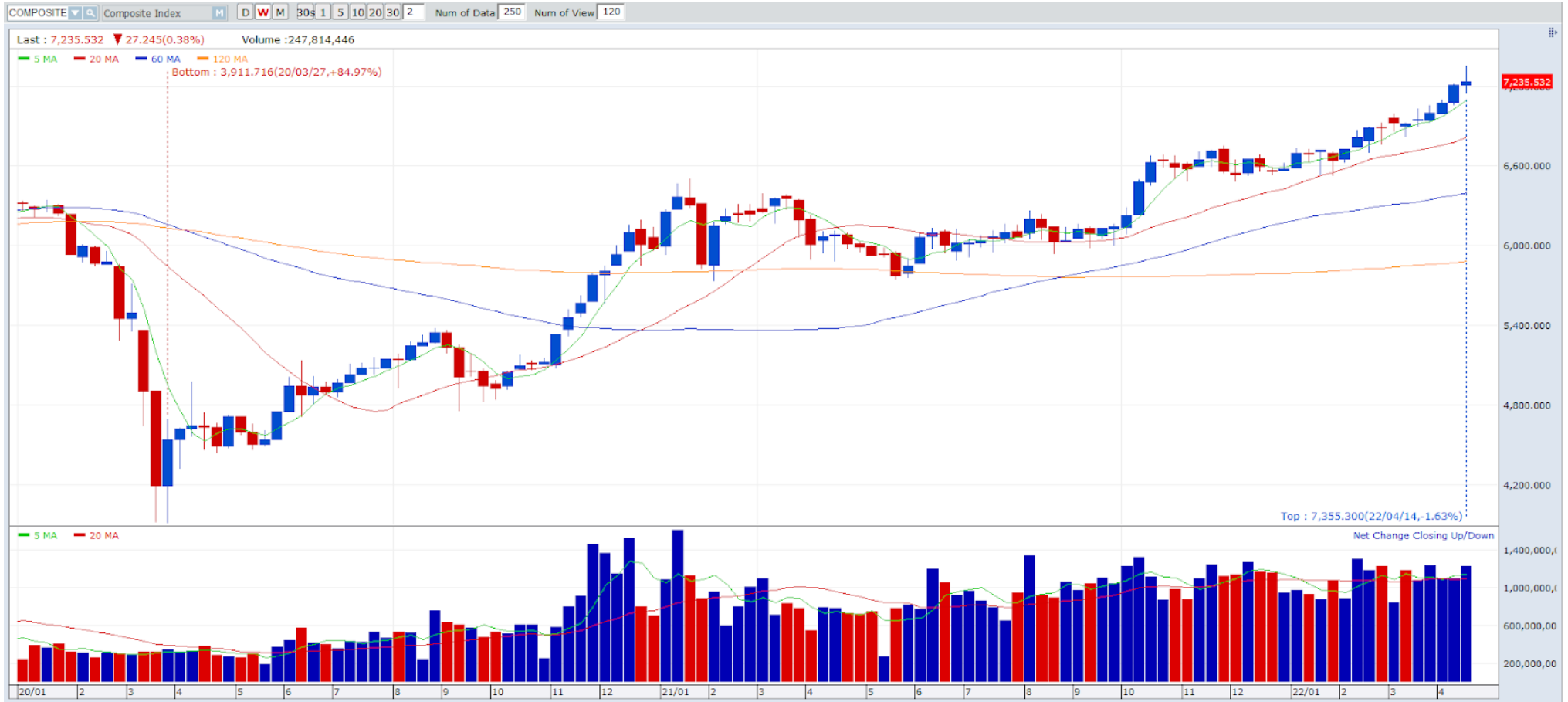


Source: Bloomberg, NHKSI Research

Stocks	TP	SL
ADRO	3,650	3,270
ANTM	3,180	2,750
EMTK	2,900	2,650
HRUM	14,750	13,500
ICBP	7,525	7,100
MDKA	5,600	5,150
PTBA	3,950	3,730
TBIG	3,250	3,070
UNTR	31,150	29,400

JCI Index

Support 7,200 Resistance 7,500



Source: NHKSI Research, Bloomberg

Economic Calendar

Date	Country	Hour JKT	Event	Period	Consensus	Previous
Monday, 18-Apr.	CH	09:00	Industrial Production YoY	Mar.	4.0%	4.3%
	ID	11:00	Trade Balance	Mar.	\$2,885Mn	\$3,820Mn
	ID	11:00	Exports YoY	Mar.	22.10%	34.14%
	ID	11:00	Imports YoY	Mar.	18.30%	25.43%
Tuesday, 19-Apr.	ID	14:20	Bank Indonesia 7D Reverse Repo Rate	Apr.	3.50%	3.50%
	US	19:30	Building Permits	Mar.	1,839k	1,865k
	US	19:30	Housing Starts	Mar.	1,745k	1,769k
Wednesday, 20-Apr.	GE	13:00	PPI YoY	Mar.	--	25.9%
	GE	13:00	PPI MoM	Mar.	--	1.4%
	US	18:00	MBA Mortgage Applications	Apr.	--	-1.3%
	US	21:00	Existing Home Sales	Mar.	5.77Mn	6.02Mn
Thursday, 21-Apr.	EC	16:00	CPI YoY	Mar.	--	7.5%
	EC	16:00	CPI MoM	Mar.	--	2.5%
	US	19:30	Initial Jobless Claims	Apr.	--	--
Friday, 22-Apr.	US	20:45	S&P Global US Manufacturing PMI	Apr.	57.8	58.8
	US	20:45	S&P Global US Service PMI	Apr.	58.6	58.0
	US	20:45	S&P Global US Composite PMI	Apr.	--	57.7

Source: Bloomberg, NHKSI Research

Corporate Action Calendar

Date	Event	Company
Monday, 18-Apr.	RUPS	WTON, TPIA, MLPT
	Cum Dividend	PRDA, EAST
Tuesday, 19-Apr.	RUPS	WEGE, SOSS, DADA
	Cum Dividend	UNTR, SMCB, MFIN, BNGA
Wednesday, 20-Apr.	RUPS	PPRO, PPRE, MLBI, JAYA, DSNG, ASII
	Cum Dividend	--
Thursday, 21-Apr.	RUPS	TCID, SRTG, PTRO, IFSH, DRMA, BWPT, BULL, BTPS, BTPN
	Cum Dividend	ROTI
Friday, 22-Apr.	RUPS	RBMS, NZIA, MTEL, INDY, EXCL, AVIA
	Cum Dividend	--

Source: NHKSI Research

NH KSI Stocks Coverage

	Last Price	End of Last Year Price	Target Price*	Rating	Upside Potential (%)	1 Year Change (%)	Market Cap (IDR tn)	Price / EPS (TTM)	Price / BVPS	Return on Equity (%)	Dividend Yield TTM (%)	Sales Growth Yoy (%)	EPS Growth Yoy (%)	Adj. Beta
Finance							3,374.3							
BBCA	7,700	7,300	8,375	Overweight	8.8	22.1	949.2	30.2x	4.7x	16.2	1.9	1.7	15.9	1.0
BBRI	4,540	4,110	4,800	Overweight	5.7	7.0	688.1	N/A	2.4x	N/A	3.8	27.6	72.9	1.5
BBNI	8,400	6,750	9,000	Overweight	7.1	42.4	156.6	14.3x	1.3x	9.3	1.7	(7.4)	232.8	1.6
BMRI	7,675	7,025	8,600	Overweight	12.1	21.3	358.2	12.8x	1.7x	14.2	4.7	3.3	66.9	1.2
Consumer Non-Cyclicals							1,029.3							
ICBP	7,175	8,700	9,400	Buy	31.0	(18.0)	83.7	13.1x	2.5x	20.2	3.0	21.8	(3.0)	0.5
UNVR	3,400	4,110	4,700	Buy	38.2	(46.0)	129.7	22.5x	30.0x	124.4	4.9	(8.0)	(19.7)	0.8
GGRM	30,600	30,600	34,200	Overweight	11.8	(16.5)	58.9	10.5x	1.0x	10.7	8.5	9.1	(26.7)	0.9
HMSP	895	965	1,000	Overweight	11.7	(33.2)	104.1	14.6x	3.6x	24.0	8.1	7.0	(17.6)	1.1
CPIN	4,990	5,950	6,350	Buy	27.3	(30.2)	81.8	22.6x	3.3x	14.9	2.2	21.6	(5.6)	1.1
AALI	12,875	9,500	14,600	Overweight	13.4	29.1	24.8	12.6x	1.2x	10.0	2.0	29.3	136.6	1.1
Consumer Cyclicals							401.6							
ERAA	540	600	850	Buy	57.4	(6.9)	8.6	8.6x	1.5x	18.9	2.6	27.4	66.7	0.9
MAPI	890	710	1,100	Buy	23.6	12.7	14.8	33.0x	2.5x	7.8	N/A	24.1	N/A	1.2
Healthcare							254.1							
KLBF	1,585	1,615	1,750	Overweight	10.4	6.0	74.3	23.3x	3.8x	17.2	1.8	13.6	16.5	0.8
SIDO	910	865	1,060	Buy	16.5	19.1	27.5	21.6x	7.9x	37.7	4.2	20.6	35.8	0.5
MIKA	2,610	2,260	2,700	Hold	3.4	(2.2)	37.2	30.3x	7.0x	24.1	1.4	27.3	45.8	0.2
Infrastructure							939.72							
TLKM	4,680	4,040	4,940	Overweight	5.6	41.9	463.6	20.2x	4.4x	22.3	3.6	6.1	13.1	1.1
JSMR	3,680	3,890	5,100	Buy	38.6	(12.4)	26.7	16.5x	1.3x	8.1	N/A	10.7	222.4	1.2
EXCL	2,710	3,170	3,150	Buy	16.2	30.9	29.1	22.5x	1.4x	6.6	1.2	2.9	245.7	1.0
TOWR	1,010	1,125	1,520	Buy	50.5	(11.4)	51.5	14.3x	4.4x	33.2	2.8	9.2	36.8	0.7
TBIG	3,090	2,950	3,240	Hold	4.9	24.6	70.0	43.2x	7.2x	17.2	1.0	16.0	48.0	0.5
WIKA	935	1,105	1,280	Buy	36.9	(34.6)	8.4	71.3x	0.6x	0.9	N/A	7.7	(36.7)	1.9
PTPP	930	990	1,700	Buy	82.8	(25.9)	5.8	21.7x	0.5x	2.5	N/A	5.9	59.3	2.0

Source : Bloomberg, NH KSI Research

NH KSI Stocks Coverage

	Last Price	End of Last Year Price	Target Price*	Rating	Upside Potential (%)	1 Year Change (%)	Market Cap (IDR tn)	Price / EPS (TTM)	Price / BVPS	Return on Equity (%)	Dividend Yield TTM (%)	Sales Growth Yoy (%)	EPS Growth Yoy (%)	Adj. Beta
Property & Real Estate							225.9							
CTRA	965	970	1,400	Buy	45.1	(13.5)	17.9	8.5x	1.1x	13.6	0.9	56.8	323.1	2.0
PWON	505	464	690	Buy	36.6	(1.9)	24.3	17.6x	1.5x	9.0	N/A	43.7	48.7	1.7
Energy							798.0							
PGAS	1,355	1,375	1,770	Buy	30.6	12.0	32.8	7.5x	0.9x	12.8	N/A	5.2	N/A	1.8
PTBA	3,770	2,710	3,420	Underweight	(9.3)	55.8	43.4	5.4x	1.8x	38.7	2.0	68.9	229.6	1.1
ADRO	3,310	2,250	3,500	Overweight	5.7	177.0	105.9	7.8x	1.7x	23.8	6.8	57.5	537.7	1.1
Industrial							473.6							
UNTR	29,800	22,150	31,200	Hold	4.7	33.9	111.2	10.8x	1.6x	16.0	2.7	31.7	71.3	1.0
ASII	6,875	5,700	7,100	Hold	3.3	31.0	278.3	13.8x	1.6x	12.3	1.9	33.4	25.1	1.2
Basic Ind.							1,042.8							
SMGR	6,025	7,250	9,500	Buy	57.7	(45.5)	35.7	17.7x	1.0x	5.7	2.9	(0.6)	(27.6)	1.2
INTP	10,050	12,100	14,225	Buy	41.5	(21.8)	37.0	20.6x	1.7x	8.4	5.0	4.1	(0.8)	1.3
INCO	7,975	4,680	6,250	Sell	(21.6)	80.0	79.2	33.3x	2.6x	7.9	0.6	24.6	101.2	1.2
ANTM	2,780	2,250	3,450	Buy	24.1	19.3	66.8	35.9x	3.2x	9.3	0.6	40.5	62.0	1.9

Source : Bloomberg, NH KSI Research

PT NH Korindo Sekuritas Indonesia

Member of Indonesia Stock Exchange

Senior Technical Analyst

Dimas Wahyu Putra P

Technical

T +62 21 5088 ext 9128

E dimas.wahyu@nhsec.co.id

Economist

Arief Machrus

Macroeconomics, Banking

T +62 21 5088 ext 9127

E arief.machrus@nhsec.co.id

Analyst

Cindy Alicia

Consumer, Healthcare

T +62 21 5088 ext 9129

E cindy.alicia@nhsec.co.id

Research Support

Jasmine Kusumawardani

Editor & Translator

T +62 21 5088 ext 9132

E jasmine.kusumawardani@nhsec.co.id

DISCLAIMER

This report and any electronic access hereto are restricted and intended only for the clients and related entities of PT NH Korindo Sekuritas Indonesia. This report is only for information and recipient use. It is not reproduced, copied, or made available for others. Under no circumstances is it considered as a selling offer or solicitation of securities buying. Any recommendation contained herein may not be suitable for all investors. Although the information hereof is obtained from reliable sources, its accuracy and completeness cannot be guaranteed. PT NH Korindo Sekuritas Indonesia, its affiliated companies, employees, and agents are held harmless from any responsibility and liability for claims, proceedings, action, losses, expenses, damages, or costs filed against or suffered by any person as a result of acting pursuant to the contents hereof. Neither is PT NH Korindo Sekuritas Indonesia, its affiliated companies, employees, nor agents are liable for errors, omissions, misstatements, negligence, inaccuracy contained herein.

All rights reserved by PT NH Korindo Sekuritas Indonesia

PT NH Korindo Sekuritas Indonesia

Member of Indonesia Stock Exchange

Head Office :

District 8 Treasury Tower 51st Fl. Unit A,
SCBD Lot.28
Jl. Jendral Sudirman Kav. 52-53 Jakarta
Selatan 12190
Telp : +62 21 50889100
Fax : +62 21 50889101

Branch Office BSD:

ITC BSD Blok R No.48
Jl. Pahlawan Seribu Serpong
Tangerang Selatan 15322
Indonesia
Telp : +62 21 5316 2049
Fax : +62 21 5316 1687

Branch Office Medan:

Jl. Timor No. 147
Medan
Sumatera Utara 20234
Indonesia
Telp : +62 61 4156500
Fax : +62 61 4568560

Branch Office Semarang:

Jl. MH Thamrin No. 152
Semarang
Jawa Tengah 50314
Indonesia
Telp : +62 24 8446878
Fax : +62 24 8446879

Branch Office Jakarta Utara:

Jl. Bandengan Utara Kav. 81
Blok A No.02, Lt 1
Jakarta Utara 14440
Indonesia
Telp : +62 21 6667 4959
Fax : +62 21 6667 4960

Branch Office Pekanbaru:

Sudirman City Square
Jl. Jend. Sudirman Blok A No.7
Pekanbaru
Indonesia
Telp : +62 761 801 133

Branch Office Surabaya:

Spazio Tower Lt. 10, Unit S05
Jl. Mayjen Yono Suwoyo
Surabaya 60226
Indonesia
Telp : +62 31 9914 1344

Branch Office Makassar:

Jl. Gunung Latimojong No.120A
Makassar
Indonesia
Telp : +62 411 361 5255

Branch Office Bandung:

Paskal Hypersquare Blok A1
Jl. Pasirkaliki No 25-27
Bandung 40181
Indonesia
Telp : +62 22 8606 1012

Branch Office Denpasar:

Ruko Griya Alamanda No.9
Jl. Cok Agung Tresna
Denpasar
Indonesia