

Laporan Mingguan (Nov 15 – Nov 19)

Ringkasan :

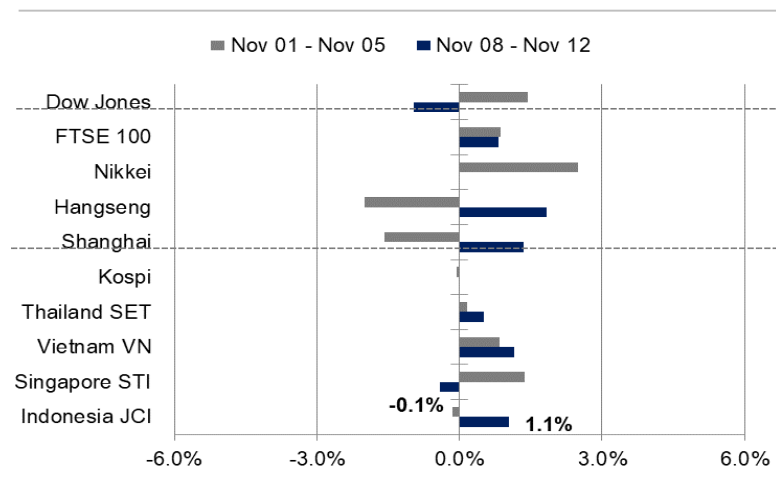
Ulasan Pekan Lalu: Pergerakan IHSG selama sepekan lalu berhasil ditutup di zona hijau. Dari sisi global, rilis data IHK AS tercatat 0,9% pada Oktober, kenaikan inflasi yang cukup pesat ini menimbulkan ekspektasi bahwa the Fed akan mempercepat kenaikan suku bunga di 2022. Sementara itu, pelaku pasar merespon positif disetujuinya RUU paket infrastruktur senilai USD1 triliun oleh kongres AS. Dari sisi domestik, Indeks Keyakinan Konsumen (IKK) periode Oktober kembali ke zona optimis pada level 113,4. Penguatan IKK ini sejalan dengan terus membaiknya aktivitas ekonomi dan perbaikan penghasilan masyarakat.

Prakiraan Pekan Ini: Setelah berhasil memecahkan rekor tertinggi baru pada pekan lalu, pergerakan IHSG pekan ini akan mencoba untuk menjaga momentum kenaikan. Badan Pusat Statistik (BPS) akan merilis data Neraca Perdagangan Oktober 2021 serta posisi Neraca Transaksi Berjalan (Current Account Balance) periode kuartal III/2021. Sementara itu, Bank Indonesia akan melaksanakan Rapat Dewan Gubernur (RDG); yang diperkirakan akan tetap menahan suku bunga acuan di level 3,5%. Pasar juga akan mencermati langkah bank sentral dalam merespon kebijakan *Tapering-off* yang dijadwalkan dimulai bulan ini.

JCI Index	: 6,651.05 (+1.1%)
Foreign Flow	: Net sell of IDR737 billion (vs. last week's net buy of IDR1.5 trillion)
USD/IDR	: 14,236 (-0.64%)

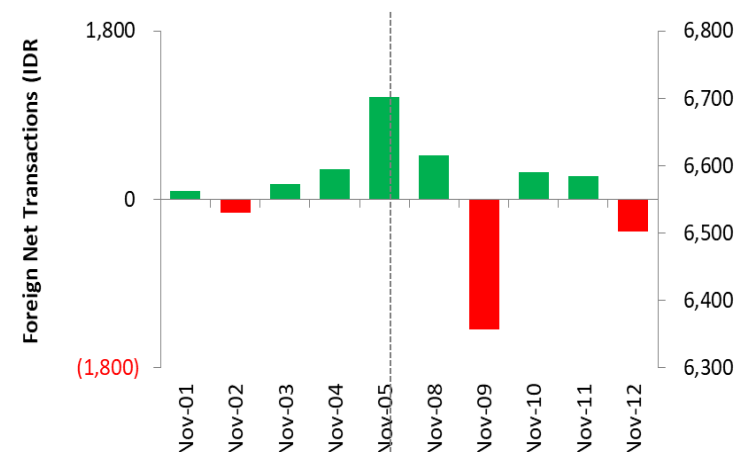
Last Week's JCI Movement

Global Market Movement



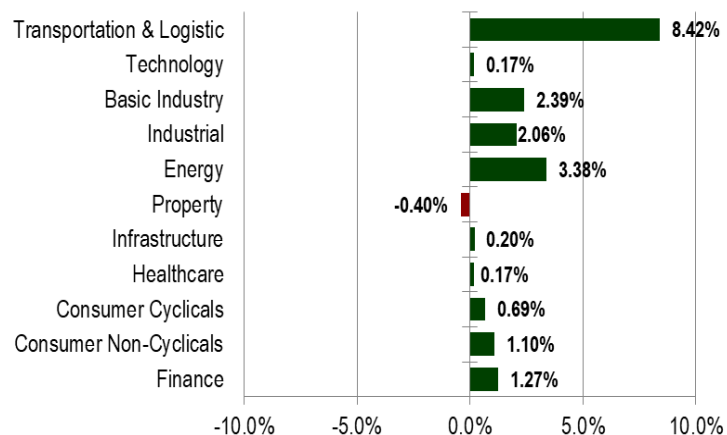
Source: Bloomberg, NHKSI Research

Foreign Net Flow – Last 10 Days



Source: Bloomberg, NHKSI Research

JCI Sector Movement



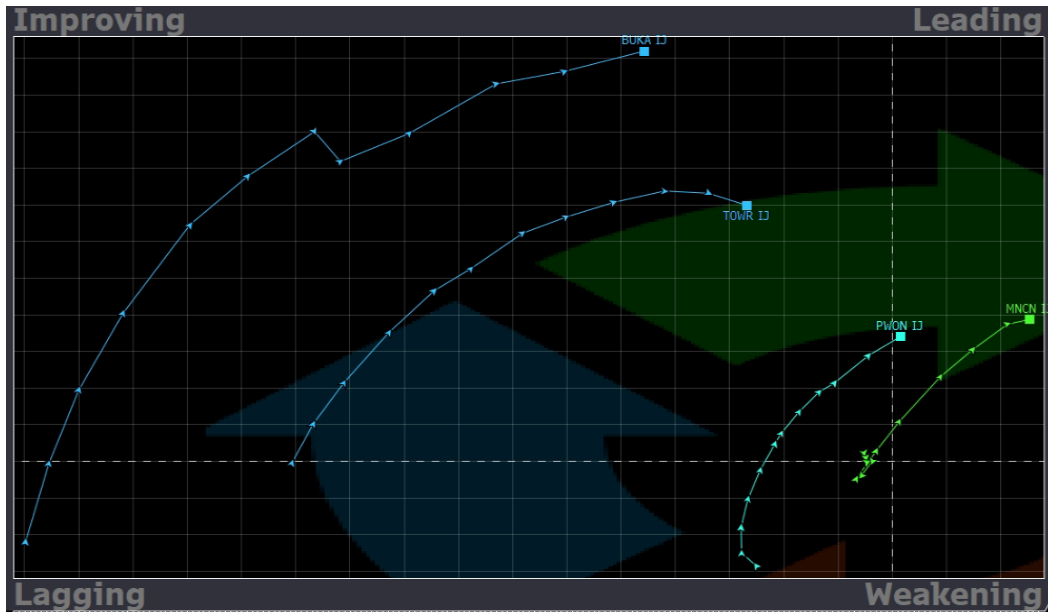
Source: Bloomberg, NHKSI Research

JCI's Top Foreign Transaction

Top Buy (RG)	NB Val.	Top Sell (RG)	NS Val.
BBCA	915,640	TLKM	-237,589
ARTO	328,754	ADRO	-96,568
KLBF	311,904	INDF	-87,371
BUKA	248,278	JPFA	-79,169
ASII	229,225	UNTR	-71,680

Source: Bloomberg, NHKSI Research

Stocks Recommendation

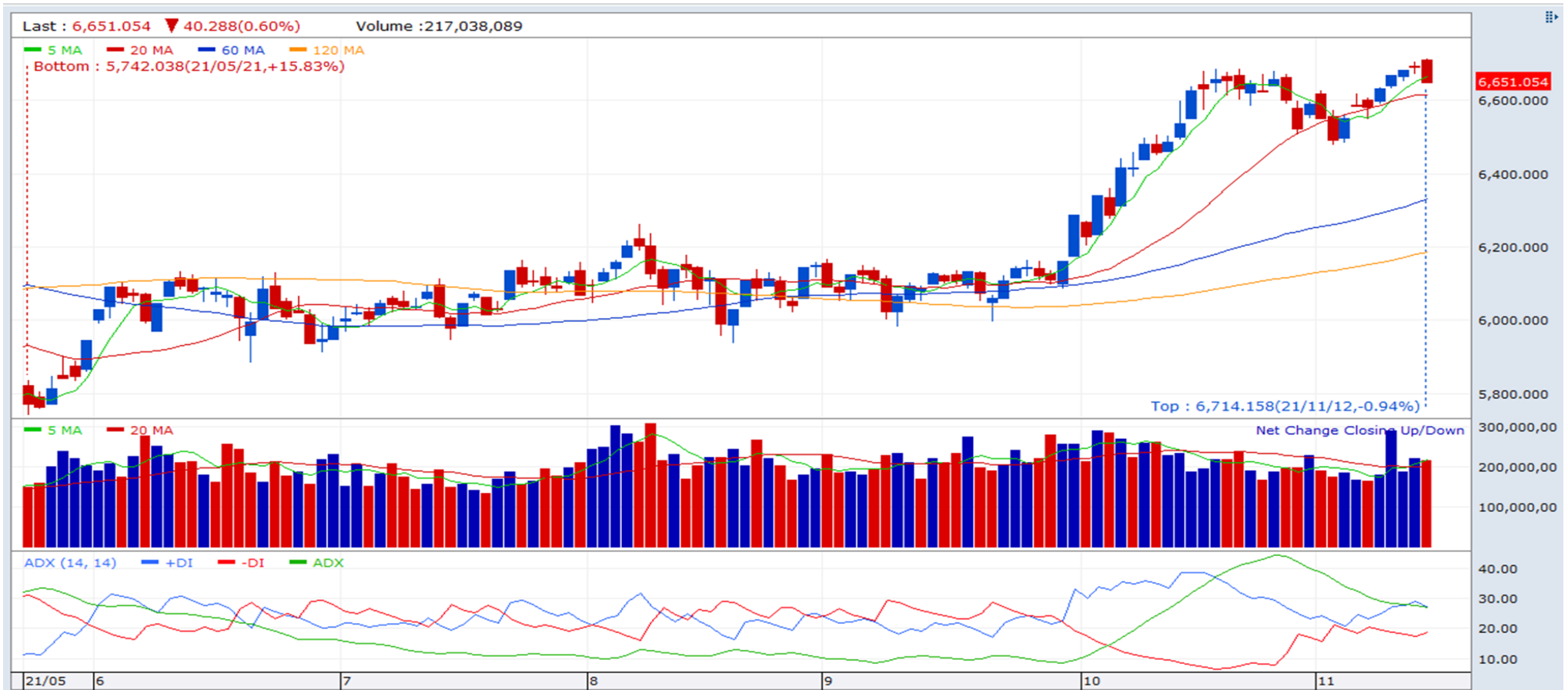


Stocks	TP	SL
BUKA	900	740
TOWR	1220	1160
PWON	580	525
MNCN	1065	950

Source: Bloomberg, NHKSI Research

JCI Index

Support	6620	Resistance	6750
---------	------	------------	------



Source: NHKSI Research, Bloomberg

Economic Calendar

Date	Country	Hour JKT	Event	Period	Consensus	Previous
Monday, 15-Nov.	CH	09:00	Industrial Production YoY	Oct.	3.0%	3.1%
	ID	11:00	Trade Balance	Oct.	\$3,900Mn	\$4,370Mn
	ID	11:00	Exports YoY	Oct.	46.87%	47.64%
	ID	11:00	Imports YoY	Oct.	59.51%	40.31%
Tuesday, 16-Nov.	EC	17:00	GDP SA QoQ	3Q21	--	2.2%
	EC	17:00	GDP SA YoY	3Q1	--	3.7%
	US	20:30	Retail Sales Advance MoM	Oct.	1.0%	0.7%
	US	21:15	Industrial Production MoM	Oct.	0.8%	-1.3%
Wednesday, 17-Nov.	UK	14:00	CPI MoM	Oct.	--	0.3%
	UK	14:00	CPI YoY	Oct.	--	3.1%
	US	19:00	MBA Mortgage Applications	Nov.	--	5.5%
	US	20:30	Housing Starts	Oct.	1,573k	1,555k
Thursday, 18-Nov.	ID	14:20	Bank Indonesia 7D Reverser Repo Rate	Nov.	3.50%	3.50%
	US	20:30	Initial Jobless Claims	Nov.	--	267k
Friday, 19-Nov.	ID	10:00	BoP Current Account Balance	3Q21	--	\$2,200Mn

Source: Bloomberg, NHKSI Research

Corporate Action Calendar

Date	Event	Company
Monday, 15-Nov.	RUPS	ENVY
	Cum Dividend	--
Tuesday, 16-Nov.	RUPS	SUPR, RIGS, BATA
	Cum Dividend	BBCA
Wednesday, 17-Nov.	RUPS	SRAJ, DADA
	Cum Dividend	--
Thursday, 18-Nov.	RUPS	TRIN, TELE, PYFA, FILM
	Cum Dividend	--
Friday, 19-Nov.	RUPS	GGRP, DEWA, CPRO, BBKP
	Cum Dividend	--

Source: NHKSI Research

NH KSI Stocks Coverage

	Last Price	End of Last Year Price	Target Price*	Rating	Upside Potential (%)	1 Year Change (%)	Market Cap (IDR tn)	Price / EPS (TTM)	Price / BVPS	Return on Equity (%)	Dividend Yield TTM (%)	Sales Growth Yoy (%)	EPS Growth Yoy (%)	Adj. Beta
Finance							3,278.3							
BBCA	7,525	6,770	8,375	Overweight	11.3	17.2	927.6	30.6x	4.7x	16.1	1.4	0.6	15.7	1.1
BBRI	4,220	4,068	N/A	<i>Under Review</i>		9.5	638.4	22.4x	2.3x	10.1	2.3	8.3	37.3	1.3
BBNI	6,900	6,175	9,000	Buy	30.4	28.4	128.7	19.1x	1.1x	5.8	0.6	(6.8)	79.8	1.5
BMRI	7,100	6,325	7,450	Hold	4.9	15.0	331.3	14.8x	1.7x	11.7	3.1	10.7	37.1	1.3
Consumer Non-Cyclicals							1,062.3							
ICBP	8,950	9,575	11,300	Buy	26.3	(8.4)	104.4	16.2x	3.2x	20.9	2.4	22.4	(4.8)	0.7
INDF	6,350	6,850	8,000	Buy	26.0	(11.5)	55.8	7.9x	1.2x	16.3	4.4	20.1	20.7	0.9
MYOR	2,400	2,710	2,700	Overweight	12.5	(0.4)	53.7	36.1x	5.0x	13.9	2.2	13.1	(37.1)	0.8
CPIN	6,050	6,525	6,675	Overweight	10.3	(10.7)	99.2	23.4x	4.1x	18.4	1.9	23.7	19.0	1.2
AAJI	10,700	12,325	12,000	Overweight	12.1	(3.6)	20.6	12.0x	1.0x	8.8	2.4	35.2	152.2	1.4
LSIP	1,380	1,375	1,380	Hold	-	29.0	9.4	8.5x	1.0x	12.0	1.4	39.0	461.5	1.5
Consumer Cyclicals							358.0							
ERAA	640	440	850	Buy	32.8	79.3	10.2	9.7x	1.8x	19.9	2.2	47.6	386.1	1.2
MAPI	875	790	825	Underweight	(5.7)	12.9	14.5	N/A	2.7x	(0.6)	N/A	18.3	86.5	1.2
ACES	1,395	1,715	1,600	Overweight	14.7	(18.9)	23.9	45.4x	4.8x	10.7	2.3	(14.3)	(39.1)	1.0
Healthcare							252.9							
KLBF	1,610	1,480	1,750	Overweight	8.7	8.4	75.5	25.2x	4.1x	16.8	3.5	11.7	12.9	0.9
SIDO	920	799	1,030	Overweight	12.0	13.7	27.8	23.8x	8.9x	36.4	3.7	23.0	36.1	0.7
MIKA	2,250	2,730	2,750	Buy	22.2	(3.0)	32.1	26.8x	6.2x	24.8	1.6	47.1	67.6	0.3
Infrastructure							772.51							
TLKM	3,600	3,269	4,400	Buy	22.2	19.9	356.6	16.0x	3.6x	22.9	4.7	3.9	13.3	1.1
ISAT	7,000	5,050	6,400	Underweight	(8.6)	225.6	38.0	6.9x	2.1x	36.9	N/A	12.0	N/A	1.4
JSMR	4,270	4,630	5,100	Buy	19.4	2.6	31.0	28.4x	1.6x	5.7	N/A	0.8	375.6	1.3
EXCL	3,000	2,730	3,150	Overweight	5.0	31.0	32.2	N/A	1.6x	(3.4)	1.1	0.7	(51.0)	1.1
TOWR	1,175	960	1,520	Buy	29.4	18.7	59.9	18.2x	5.5x	32.6	2.4	7.8	30.8	0.8
TBIG	2,860	1,630	3,240	Overweight	13.3	108.0	64.8	51.3x	7.0x	16.1	1.1	15.3	29.9	0.7
WIKA	1,290	1,985	1,410	Overweight	9.3	(6.2)	11.6	612.9x	0.8x	0.1	N/A	(5.1)	(66.7)	1.8
PTPP	1,245	1,865	1,380	Overweight	10.8	25.1	7.7	33.4x	0.7x	2.1	N/A	10.8	200.0	1.8
Property & Real Estate							273.9							
CTRA	1,115	985	1,320	Buy	18.4	28.9	20.7	12.7x	1.3x	10.7	0.8	43.4	188.9	1.4
BSDE	1,160	1,225	1,345	Buy	15.9	14.9	24.6	23.2x	0.8x	3.5	N/A	39.2	N/A	1.4
PWON	535	510	585	Overweight	9.3	20.5	25.8	28.3x	1.7x	6.2	N/A	24.6	(3.7)	1.5

Source : Bloomberg, NH KSI Research

NH KSI Stocks Coverage

	Last Price	End of Last Year Price	Target Price*	Rating	Upside Potential (%)	1 Year Change (%)	Market Cap (IDR tn)	Price / EPS (TTM)	Price / BVPS	Return on Equity (%)	Dividend Yield TTM (%)	Sales Growth Yoy (%)	EPS Growth Yoy (%)	Adj. Beta
Property & Real Estate							273.9							
CTRA	1,115	985	1,320	Buy	18.4	28.9	20.7	12.7x	1.3x	10.7	0.8	43.4	188.9	1.4
BSDE	1,160	1,225	1,345	Buy	15.9	14.9	24.6	23.2x	0.8x	3.5	N/A	39.2	N/A	1.4
PWON	535	510	585	Overweight	9.3	20.5	25.8	28.3x	1.7x	6.2	N/A	24.6	(3.7)	1.5
Energy							503.3							
PGAS	1,495	1,655	2,030	Buy	35.8	27.2	36.2	N/A	1.0x	(1.3)	N/A	4.8	437.1	1.8
PTBA	2,660	2,810	3,420	Buy	28.6	30.4	30.6	5.5x	1.5x	29.2	2.8	50.8	174.8	1.1
ITMG	20,775	13,850	16,250	Sell	(21.8)	143.0	23.5	5.9x	1.5x	28.3	6.7	51.8	525.0	1.2
ADRO	1,685	1,430	1,840	Overweight	9.2	43.4	53.9	23.5x	1.0x	4.3	3.9	14.7	9.5	1.4
Industrial							406.7							
UNTR	22,800	26,600	25,500	Overweight	11.8	8.1	85.0	10.0x	1.3x	13.4	3.5	24.4	46.5	0.9
ASII	6,150	6,025	6,000	Hold	(2.4)	2.5	249.0	14.6x	1.5x	10.6	2.1	28.4	6.6	1.2
Basic Ind.							839.6							
SMGR	9,425	12,425	12,275	Buy	30.2	(16.8)	55.9	21.2x	1.6x	7.8	2.0	(1.1)	(10.0)	1.3
INTP	12,450	14,475	14,225	Overweight	14.3	(13.2)	45.8	24.1x	2.1x	8.6	5.8	4.5	8.2	1.2
INCO	4,890	5,100	5,500	Overweight	12.5	10.9	48.6	26.5x	1.6x	6.3	1.0	20.2	55.0	1.6
ANTM	2,400	1,935	3,270	Buy	36.3	105.1	57.7	N/A	N/A	N/A	0.7	46.8	104.7	1.8

Source : Bloomberg, NH KSI Research

PT NH Korindo Sekuritas Indonesia

Member of Indonesia Stock Exchange

Head of Research

Anggaraksa Arismunandar

Market Strategy, Economy, Misc. Industry

T +62 21 5088 9134 ext. 9134

E anggaraksa@nhsec.co.id

Senior Technical Analyst

Dimas Wahyu Putra P

Technical

T +62 21 5088 ext 9128

E dimas.wahyu@nhsec.co.id

Analyst

Arief Machrus

Banking, Fixed Income

T +62 21 5088 ext 9127

E arief.machrus@nhsec.co.id

Analyst

Ajeng Kartika Hapsari

Property, Construction

T +62 21 5088 ext 9130

E ajeng@nhsec.co.id

Analyst

Putu Chantika Putri D

Consumer, Retail

T +62 21 5088 ext 9129

E putu.chantika@nhsec.co.id

Analyst

Glenn Samuael Tanuwidjaja

Telco, Mining

T +62 21 5088 ext 9128

E glenn.samuael@nhsec.co.id

Research Support

Jasmine Kusumawardani

T +62 21 5088 ext 9132

E jasmine.kusumawardani@nhsec.co.id

DISCLAIMER

This report and any electronic access hereto are restricted and intended only for the clients and related entities of PT NH Korindo Sekuritas Indonesia. This report is only for information and recipient use. It is not reproduced, copied, or made available for others. Under no circumstances is it considered as a selling offer or solicitation of securities buying. Any recommendation contained herein may not be suitable for all investors. Although the information hereof is obtained from reliable sources, its accuracy and completeness cannot be guaranteed. PT NH Korindo Sekuritas Indonesia, its affiliated companies, employees, and agents are held harmless from any responsibility and liability for claims, proceedings, action, losses, expenses, damages, or costs filed against or suffered by any person as a result of acting pursuant to the contents hereof. Neither is PT NH Korindo Sekuritas Indonesia, its affiliated companies, employees, nor agents are liable for errors, omissions, misstatements, negligence, inaccuracy contained herein.

PT NH Korindo Sekuritas Indonesia

Member of Indonesia Stock Exchange

Head Office :

District 8 Treasury Tower 51st Fl. Unit A,
SCBD Lot.28
Jl. Jendral Sudirman Kav. 52-53 Jakarta
Selatan 12190
Telp : +62 21 50889100
Fax : +62 21 50889101

Branch Office BSD:

ITC BSD Blok R No.48
Jl. Pahlawan Seribu Serpong
Tangerang Selatan 15322
Indonesia
Telp : +62 21 5316 2049
Fax : +62 21 5316 1687

Branch Office Medan:

Jl. Timor No. 147
Medan
Sumatera Utara 20234
Indonesia
Telp : +62 61 4156500
Fax : +62 61 4568560

Branch Office Semarang:

Jl. MH Thamrin No. 152
Semarang
Jawa Tengah 50314
Indonesia
Telp : +62 24 8446878
Fax : +62 24 8446879

Branch Office Jakarta Utara:

Jl. Bandengan Utara Kav. 81
Blok A No.02, Lt 1
Jakarta Utara 14440
Indonesia
Telp : +62 21 6667 4959
Fax : +62 21 6667 4960

Branch Office Pekanbaru:

Sudirman City Square
Jl. Jend. Sudirman Blok A No.7
Pekanbaru
Indonesia
Telp : +62 761 801 133

Branch Office Surabaya:

Spazio Tower Lt. 10, Unit S05
Jl. Mayjen Yono Suwoyo
Surabaya 60226
Indonesia
Telp : +62 31 9914 1344

Branch Office Makassar:

Jl. Gunung Latimojong No.120A
Makassar
Indonesia
Telp : +62 411 361 5255

Branch Office Bandung:

Paskal Hypersquare Blok A1
Jl. Pasirkaliki No 25-27
Bandung 40181
Indonesia
Telp : +62 22 8606 1012

Branch Office Denpasar:

Ruko Griya Alamanda No.9
Jl. Cok Agung Tresna
Denpasar
Indonesia