

## Weekly Brief (Sep 20 – Sep 24)

### Summary:

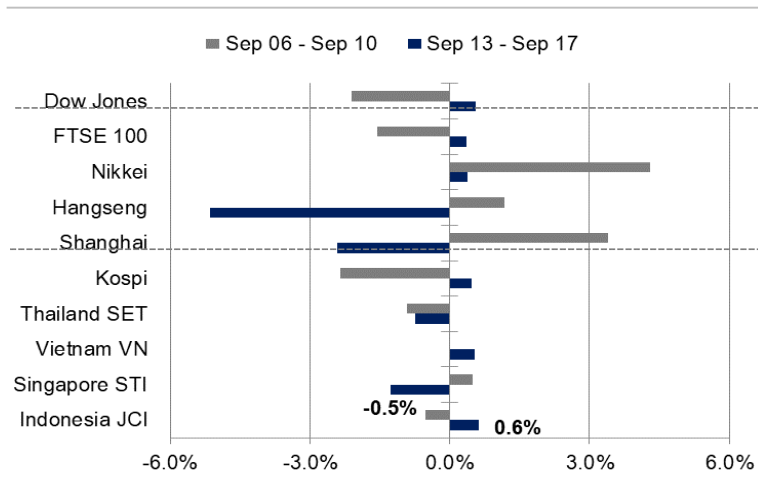
**Last week review:** JCI's movement was in green zone for the past week. Globally, US inflation data release was at 0.3% MoM, below the expected number. However, the US retail sales data booked an increase of 0.7% for August. Domestically, the government decided to extend PPKM until September 20, 2021, with Bali down to level 3. There are also other positive sentiments such as the number of Covid-19 cases that fell to its lowest level and Indonesia trade balance surplus of USD4.74 billion for August.

**This week's outlook:** The movement of JCI this week will be influenced by central bank sentiments. Domestically, Bank Indonesia is predicted to maintain its accommodative monetary policy amid the low inflation. Globally, investors' attention will be directed to the Federal Reserve's monthly meeting; which is expected to give a clearer picture of the start of stimulus reduction. In the past weeks, some of the US central bank's officials have given signals that tapering off will begin at the end of the year.

<b>JCI Index</b>	<b>: 6,133.24 (+0.6%)</b>
<b>Foreign Flow</b>	<b>: Net buy of IDR1.5 trillion (vs. last week's net buy of IDR1.1 trillion )</b>
<b>USD/IDR</b>	<b>: 14,223 (+0.14%)</b>

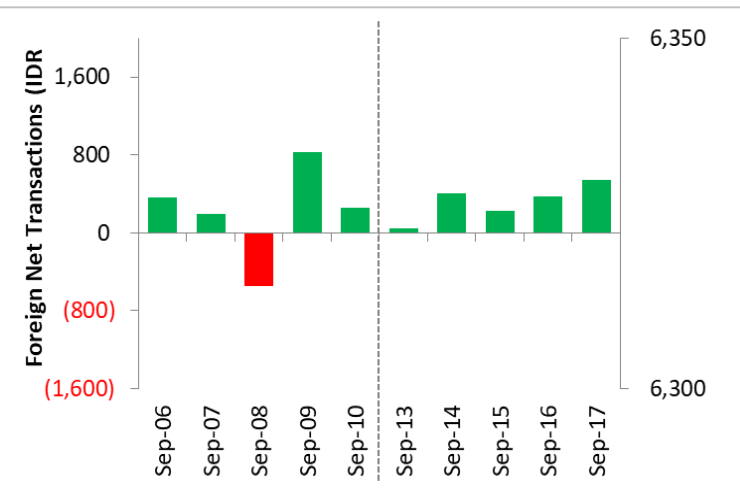
# Last Week's JCI Movement

## Global Market Movement



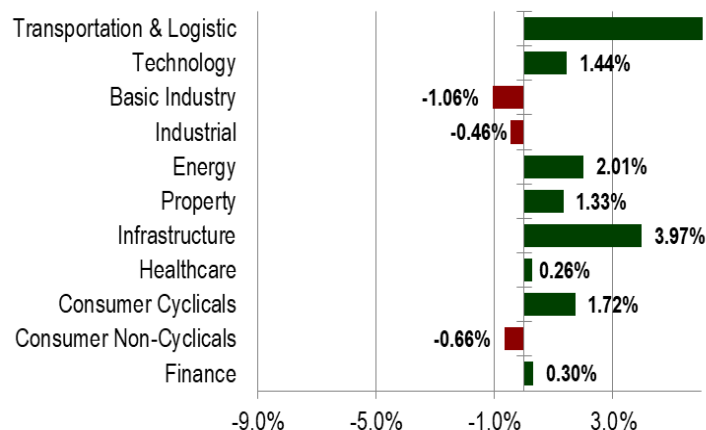
Source: Bloomberg, NHKSI Research

## Foreign Net Flow – Last 10 Days



Source: Bloomberg, NHKSI Research

## JCI Sector Movement



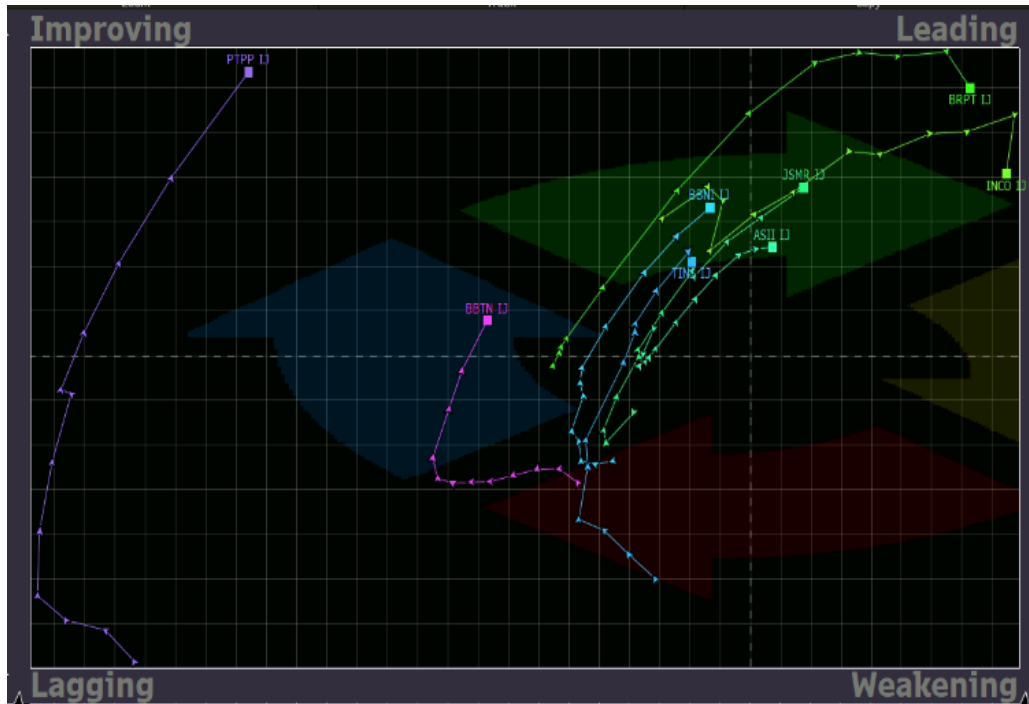
Source: Bloomberg, NHKSI Research

## JCI's Top Foreign Transaction

Top Buy (RG)	NB Val.	Top Sell (RG)	NS Val.
BUKA	334,568	UNVR	-142,077
BBCA	325,271	ANTM	-132,087
BBRI	312,584	UNTR	-68,155
TLKM	257,150	BBNI	-56,865
AGRO	205,556	ERAA	-54,564

Source: Bloomberg, NHKSI Research

# Stocks Recommendation



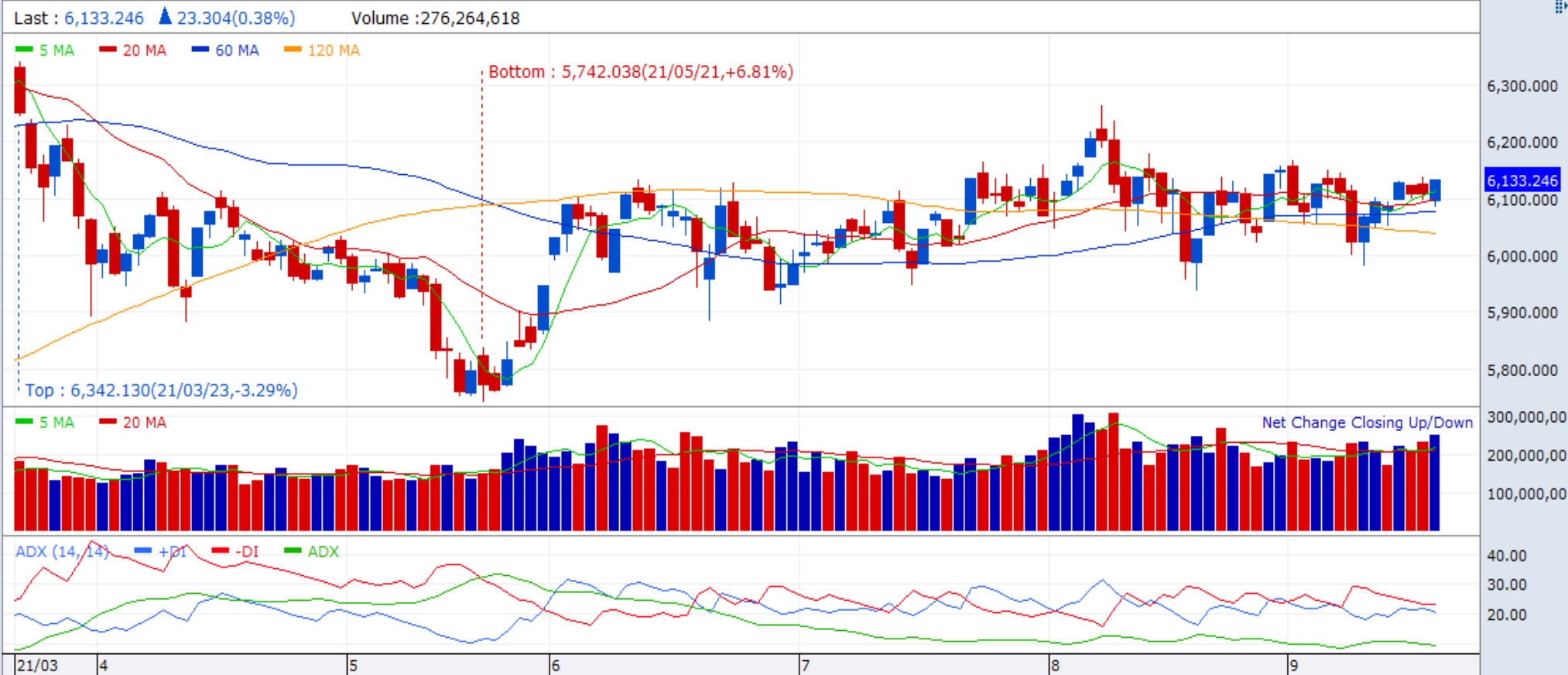
Stocks	TP	SL
ASII	5600	5250
BBNI	5500	5200
BBTN	1445	1380
BRPT	1040	985
INCO	5000	4800
JSMR	4040	3870
PTPP	1150	1025
TINS	1570	1450

Source: Bloomberg, NHKSI Research

# JCI Index

Support 5950 Resistance 6280

COMPOSITE Composite Index M D W M 30s 1 5 10 20 30 2 Num of Data 250 Num of View 120



Source: NHKSI Research, Bloomberg

# Economic Calendar

Date	Country	Hour JKT	Event	Period	Consensus	Previous
<b>Monday, 20-Sept.</b>	--	--	--	--	--	--
<b>Tuesday, 21-Sept.</b>	ID	14:20	Bank Indonesia 7DRRR	Sept.	3.50%	3.50%
	US	19:30	Housing Stars	Aug.	1,543k	1,534k
<b>Wednesday, 22-Sept.</b>	US	18:00	MBA Mortgage Applications	Sept.	--	0.3%
	US	21:00	Existing Home Sales	Aug.	5.84m	5.99m
<b>Thursday, 23-Sept</b>	US	01:00	FOMC Rate Decision	Sept.	0.25%	0.25%
	UK	18:00	Bank of England Bank Rate	Sept	0.100%	0.100%
	US	19:30	Initial Jobless Claims	Sept.	--	332k
	US	20:45	Markit US Manufacturing PMI	Sept.	61.0	61.1
<b>Friday, 24-Sept</b>	GE	15:00	IFO Expectations	Sept.	96.7	97.5
	GE	15:00	IFO Business Climate	Sept.	98.5	99.4
	US	21:00	New Home Sales	Aug.	713k	708k

Source: Bloomberg, NHKSI Research

# Corporate Action Calendar

Date	Event	Company
<b>Monday, 20-Sept.</b>	RUPS	EPAC, BBYB
	Cum Dividend	--
<b>Tuesday, 21-Sept.</b>	RUPS	WSKT, AKKU
	Cum Dividend	--
<b>Wednesday, 22-Sept.</b>	RUPS	PPRE, ARTO
	Cum Dividend	TGKA, BSSR
<b>Thursday, 23-Sept.</b>	RUPS	MOLI, BBCA
	Cum Dividend	--
<b>Friday, 24-Sept</b>	RUPS	RONY, MGLV, KIJA, CNTX
	Cum Dividend	--

Source: NHKSI Research

# NHKSJ Stocks Coverage

	Last Price	End of Last Year Price	Target Price*	Rating	Upside Potential (%)	1 Year Change (%)	Market Cap (IDR tn)	Price / EPS (TTM)	Price / BVPS	Return on Equity (%)	Dividend Yield TTM (%)	Sales Growth Yoy (%)	EPS Growth Yoy (%)	Adj. Beta
<b>Finance</b>							2,843.9							
BBCA	32,600	33,850	36,200	Overweight	11.0	13.3	803.8	27.4x	4.3x	16.5	1.6	(0.1)	18.1	1.0
BBRI	3,610	4,085	N/A	<i>Under Review</i>		15.2	508.1	21.5x	2.3x	11.0	2.7	6.4	22.8	1.3
BBNI	5,300	6,175	6,050	Overweight	14.2	12.3	98.8	25.6x	0.8x	3.4	0.8	(5.7)	12.8	1.5
BMRI	6,050	6,325	7,450	Buy	23.1	8.5	282.3	14.6x	1.5x	10.5	3.6	8.0	21.5	1.3
<b>Consumer Non-Cyclicals</b>							1,008.8							
GGRM	31,850	41,000	34,200	Overweight	7.4	(26.6)	61.3	10.0x	1.0x	10.6	8.2	12.9	(39.5)	0.9
ICBP	8,150	9,575	11,300	Buy	38.7	(20.1)	95.0	14.8x	2.9x	20.9	2.6	22.4	(4.8)	0.7
INDF	6,200	6,850	8,000	Buy	29.0	(16.2)	54.4	7.7x	1.2x	16.3	4.5	20.1	20.7	0.9
MYOR	2,400	2,710	2,700	Overweight	12.5	1.3	53.7	26.1x	4.5x	18.2	2.2	18.7	0.0	0.8
HMSP	970	1,505	1,300	Buy	34.0	(36.0)	112.8	14.5x	4.4x	29.8	7.5	6.5	(14.3)	1.0
UNVR	3,950	7,350	5,500	Buy	39.2	(51.1)	150.7	22.8x	37.5x	102.8	4.7	(7.3)	(15.8)	0.8
CPIN	6,750	6,525	6,675	Hold	(1.1)	12.0	110.7	22.0x	4.2x	20.6	1.7	28.8	73.0	1.3
AALI	8,525	12,325	12,000	Buy	40.8	(21.1)	16.4	15.0x	0.8x	5.7	2.3	19.3	65.7	1.4
LSIP	1,075	1,375	1,380	Buy	28.4	7.5	7.3	6.6x	0.7x	12.0	1.9	39.0	461.5	1.5
<b>Consumer Cyclicals</b>							323.5							
ERAA	590	440	850	Buy	44.1	76.1	9.4	8.9x	1.6x	19.9	2.3	47.6	386.1	1.2
MAPI	755	790	825	Overweight	9.3	36.0	12.5	93.9x	2.2x	2.3	N/A	33.9	N/A	1.2
ACES	1,350	1,715	1,600	Buy	18.5	(11.5)	23.2	35.5x	4.7x	13.1	2.4	(7.0)	(23.6)	0.9
SCMA	2,150	2,290	2,050	Hold	(4.7)	82.2	31.8	22.1x	6.7x	28.1	N/A	24.8	39.9	1.2
<b>Healthcare</b>							246.1							
KLBF	1,450	1,480	1,750	Buy	20.7	(4.3)	68.0	23.9x	3.8x	16.6	3.9	6.6	7.9	0.9
SIDO	790	805	930	Buy	17.7	4.6	23.7	23.0x	7.4x	32.8	4.3	13.4	21.3	0.7
MIKA	2,390	2,730	3,250	Buy	36.0	1.7	34.0	29.0x	6.1x	23.8	1.5	65.8	115.0	0.3
<b>Infrastructure</b>							754.61							
TLKM	3,530	3,269	4,400	Buy	24.6	26.8	349.7	15.7x	3.6x	22.9	4.8	3.9	13.3	1.1
ISAT	6,900	5,050	6,400	Underweight	(7.2)	223.9	37.5	7.2x	2.1x	34.9	N/A	11.4	N/A	1.4
JSMR	3,880	4,630	5,100	Buy	31.4	17.9	28.2	22.5x	1.4x	6.5	N/A	1.6	709.1	1.3
EXCL	3,000	2,730	3,150	Overweight	5.0	43.5	32.2	N/A	1.6x	(3.3)	1.1	(0.8)	(58.9)	1.1
TOWR	1,345	960	1,520	Overweight	13.0	30.6	68.6	20.8x	6.3x	32.6	2.1	7.8	30.8	0.9
TBIG	2,990	1,630	3,240	Overweight	8.4	141.1	67.7	53.6x	7.4x	16.1	1.1	15.3	29.9	0.7
WIKA	1,095	1,985	1,390	Buy	26.9	(4.4)	9.8	520.2x	0.7x	0.1	N/A	(5.1)	(66.7)	1.8
PTPP	1,050	1,865	1,220	Buy	16.2	26.5	6.5	32.9x	0.6x	1.8	N/A	(4.3)	366.7	1.9

Source : Bloomberg, NHKSJ Research

# NH KSI Stocks Coverage

	Last Price	End of Last Year Price	Target Price*	Rating	Upside Potential (%)	1 Year Change (%)	Market Cap (IDR tn)	Price / EPS (TTM)	Price / BVPS	Return on Equity (%)	Dividend Yield TTM (%)	Sales Growth Yoy (%)	EPS Growth Yoy (%)	Adj. Beta
<b>Property &amp; Real Estate</b>							256.9							
CTRA	905	985	1,320	Buy	45.9	39.2	16.8	10.3x	1.1x	10.7	0.9	43.4	188.9	1.4
BSDE	980	1,225	1,345	Buy	37.2	30.7	20.7	19.6x	0.7x	3.5	N/A	39.2	N/A	1.4
PWON	478	510	585	Buy	22.4	27.1	23.0	25.2x	1.5x	6.2	N/A	24.6	(3.7)	1.5
<b>Energy</b>							385.4							
PGAS	1,095	1,655	2,030	Buy	85.4	4.3	26.5	N/A	0.8x	(10.3)	N/A	(16.1)	28.9	1.7
PTBA	2,320	2,810	2,250	Hold	(3.0)	15.4	26.7	9.0x	1.5x	17.4	3.2	14.2	38.3	1.1
ITMG	17,825	13,850	16,250	Underweight	(8.8)	114.8	20.1	10.7x	1.5x	14.3	2.7	3.6	266.7	1.2
ADRO	1,335	1,430	1,580	Buy	18.4	18.1	42.7	18.6x	0.8x	4.3	5.0	14.7	9.5	1.4
<b>Industrial</b>							369.2							
UNTR	20,500	26,600	25,500	Buy	24.4	(12.4)	76.5	11.8x	1.2x	10.5	3.1	12.4	11.2	0.9
ASII	5,425	6,025	6,000	Overweight	10.6	11.6	219.6	16.1x	1.4x	8.6	2.1	19.6	(22.4)	1.2
<b>Basic Ind.</b>							783.9							
SMGR	8,675	12,425	12,275	Buy	41.5	(6.7)	51.5	17.3x	1.5x	8.9	2.2	1.2	30.1	1.3
INTP	10,400	14,475	14,225	Buy	36.8	(4.8)	38.3	19.9x	1.7x	8.3	7.0	8.0	24.8	1.2
INCO	4,850	5,100	5,500	Overweight	13.4	25.3	48.2	38.2x	1.7x	4.4	1.0	15.1	18.0	1.6
ANTM	2,400	1,935	3,270	Buy	36.3	209.7	57.7	28.0x	2.9x	10.9	0.7	77.0	N/A	1.8

Source : Bloomberg, NH KSI Research



# PT NH Korindo Sekuritas Indonesia

Member of Indonesia Stock Exchange

## Head of Research

**Anggaraksa Arismunandar**

Market Strategy, Economy, Misc. Industry

T +62 21 5088 9134 ext. 9134

E [anggaraksa@nhsec.co.id](mailto:anggaraksa@nhsec.co.id)

## Senior Technical Analyst

**Dimas Wahyu Putra P**

Technical

T +62 21 5088 ext 9128

E [dimas.wahyu@nhsec.co.id](mailto:dimas.wahyu@nhsec.co.id)

## Economist

**Arief Machrus**

Banking, Fixed Income

T +62 21 5088 ext 9127

E [arief.machrus@nhsec.co.id](mailto:arief.machrus@nhsec.co.id)

## Analyst

**Ajeng Kartika Hapsari**

Property, Construction

T +62 21 5088 ext 9130

E [ajeng@nhsec.co.id](mailto:ajeng@nhsec.co.id)

## Analyst

**Putu Chantika Putri D**

Consumer, Retail

T +62 21 5088 ext 9129

E [putu.chantika@nhsec.co.id](mailto:putu.chantika@nhsec.co.id)

## Research Support

**Jasmine Kusumawardani**

T +62 21 5088 ext 9132

E [jasmine.kusumawardani@nhsec.co.id](mailto:jasmine.kusumawardani@nhsec.co.id)

## DISCLAIMER

This report and any electronic access hereto are restricted and intended only for the clients and related entities of PT NH Korindo Sekuritas Indonesia. This report is only for information and recipient use. It is not reproduced, copied, or made available for others. Under no circumstances is it considered as a selling offer or solicitation of securities buying. Any recommendation contained herein may not be suitable for all investors. Although the information hereof is obtained from reliable sources, its accuracy and completeness cannot be guaranteed. PT NH Korindo Sekuritas Indonesia, its affiliated companies, employees, and agents are held harmless from any responsibility and liability for claims, proceedings, action, losses, expenses, damages, or costs filed against or suffered by any person as a result of acting pursuant to the contents hereof. Neither is PT NH Korindo Sekuritas Indonesia, its affiliated companies, employees, nor agents are liable for errors, omissions, misstatements, negligence, inaccuracy contained herein.

# PT NH Korindo Sekuritas Indonesia

Member of Indonesia Stock Exchange

## Head Office :

District 8 Treasury Tower 51st Fl. Unit A,  
SCBD Lot.28  
Jl. Jendral Sudirman Kav. 52-53 Jakarta  
Selatan 12190  
Telp : +62 21 50889100  
Fax : +62 21 50889101

## Branch Office BSD:

ITC BSD Blok R No.48  
Jl. Pahlawan Seribu Serpong  
Tangerang Selatan 15322  
Indonesia  
Telp : +62 21 5316 2049  
Fax : +62 21 5316 1687

## Branch Office Medan:

Jl. Timor No. 147  
Medan  
Sumatera Utara 20234  
Indonesia  
Telp : +62 61 4156500  
Fax : +62 61 4568560

## Branch Office Semarang:

Jl. MH Thamrin No. 152  
Semarang  
Jawa Tengah 50314  
Indonesia  
Telp : +62 24 8446878  
Fax : +62 24 8446879

## Branch Office Jakarta Utara:

Jl. Bandengan Utara Kav. 81  
Blok A No.02, Lt 1  
Jakarta Utara 14440  
Indonesia  
Telp : +62 21 6667 4959  
Fax : +62 21 6667 4960

## Branch Office Pekanbaru:

Sudirman City Square  
Jl. Jend. Sudirman Blok A No.7  
Pekanbaru  
Indonesia  
Telp : +62 761 801 133

## Branch Office Surabaya:

Spazio Tower Lt. 10, Unit S05  
Jl. Mayjen Yono Suwoyo  
Surabaya 60226  
Indonesia  
Telp : +62 31 9914 1344

## Branch Office Makassar:

Jl. Gunung Latimojong No.120A  
Makassar  
Indonesia  
Telp : +62 411 361 5255

## Branch Office Bandung:

Paskal Hypersquare Blok A1  
Jl. Pasirkaliki No 25-27  
Bandung 40181  
Indonesia  
Telp : +62 22 8606 1012

## Branch Office Denpasar:

Ruko Griya Alamanda No.9  
Jl. Cok Agung Tresna  
Denpasar  
Indonesia