

Laporan Mingguan (Aug 30 – Sept 03)

Ringkasan:

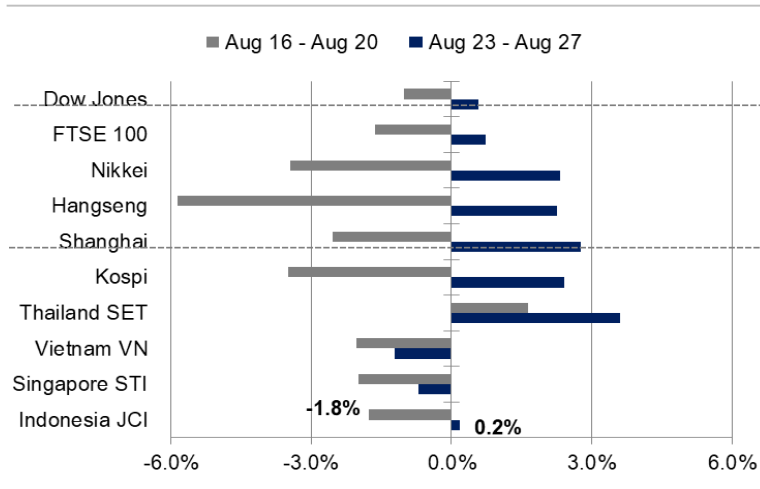
Ulasan Pekan Lalu: Laju pergerakan IHSG selama sepekan lalu ditutup di zona hijau. Dari sisi global, pelaku pasar menyambut baik diloloskannya anggaran USD3,5 triliun yang akan menjadi agenda penting pemerintahan presiden Biden. Namun, sinyal The Fed mengenai kebijakan tapering off masih menjadi perhatian pelaku pasar. Dari sisi domestik, pemerintah memperpanjang PPKM hingga 30 Agustus, namun pemerintah menurunkan dari level 4 menjadi level 3 dalam beberapa minggu mendatang lantaran sejumlah wilayah sudah menunjukkan adanya penurunan kasus Covid-19.

Prakiraan Pekan Ini: Pergerakan IHSG pekan ini berpotensi untuk dipengaruhi beberapa rilis data ekonomi domestik serta sentimen global. Badan Pusat Statistik (BPS) akan mengumumkan tingkat inflasi bulan Agustus 2021, dimana survei ekonom memperkirakan laju inflasi pada level 0,05% secara bulanan dan 1,6% secara tahunan. Pelaku pasar juga akan mencermati data PMI Manufaktur yang turun drastis ke level 40,1 pada bulan sebelumnya. Dari sentimen global, investor akan bereaksi pada arah kebijakan moneter The Federal Reserve yang diumumkan dari hasil pertemuan tahunan Jackson Hole akhir pekan lalu.

JCI Index	: 6,041.36 (+0.2%)
Foreign Flow	: Net buy of IDR960 billion (vs. last week's net buy of IDR1.8 trillion)
USD/IDR	: 14,418 (-0.24%)

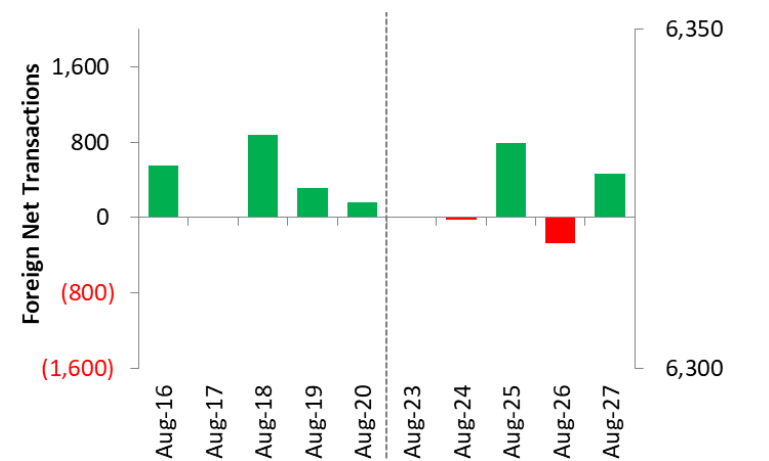
Last Week's JCI Movement

Global Market Movement



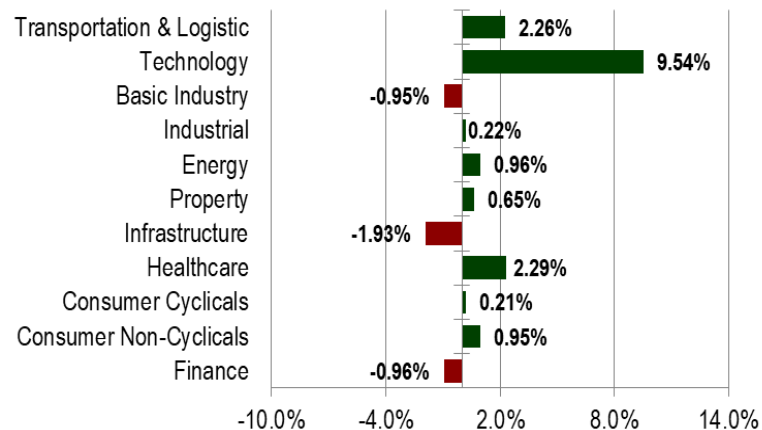
Source: Bloomberg, NHKSI Research

Foreign Net Flow – Last 10 Days



Source: Bloomberg, NHKSI Research

JCI Sector Movement



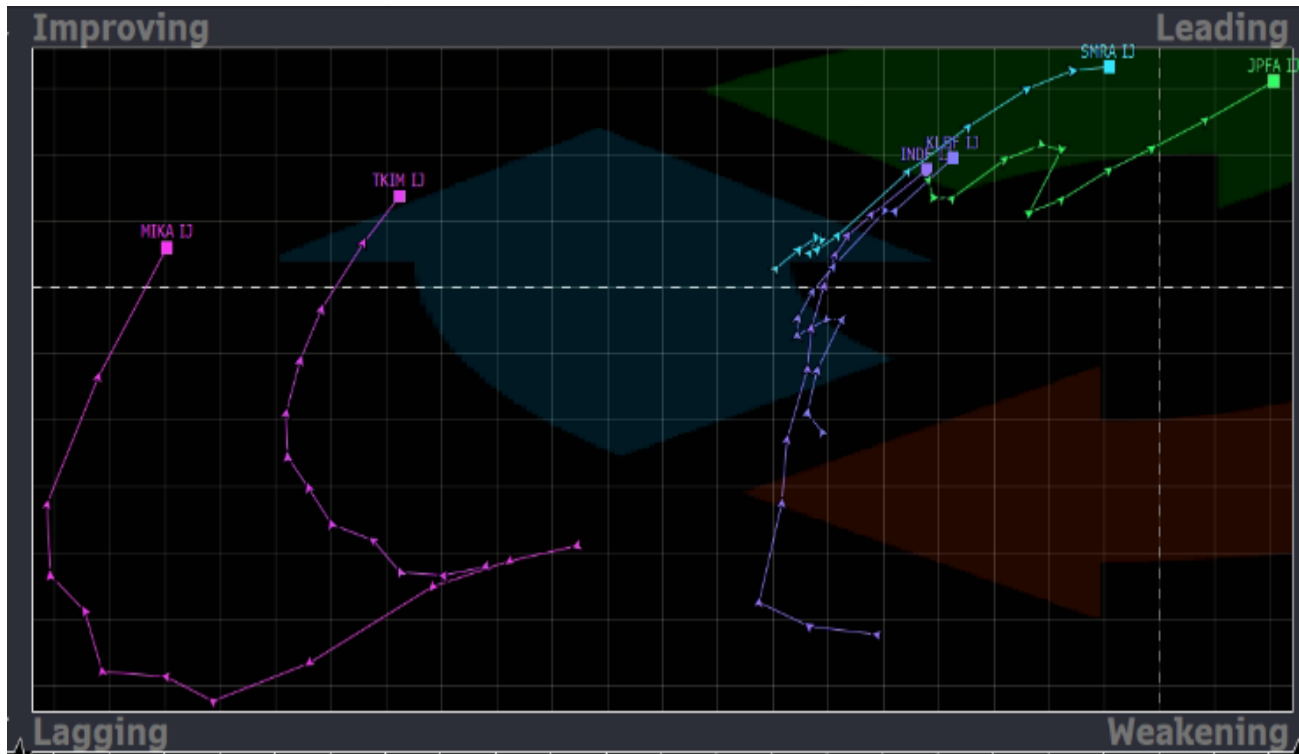
Source: Bloomberg, NHKSI Research

JCI's Top Foreign Transaction

Top Buy (RG)	NB Val.	Top Sell (RG)	NS Val.
BBCA	748,087	ADRO	-164,630
BUKA	396,040	ERAA	-106,960
TLKM	223,435	ARTO	-84,462
ASII	105,007	FREN	-68,239
BABP	103,920	EMTK	-59,174

Source: Bloomberg, NHKSI Research

Stocks Recommendation



Stocks	Target Price	Stop Loss
INDF	6575	6350
JPFA	1830	1700
KLBF	1410	1345
MIKA	2500	2250
SMRA	850	750
TKIM	8850	6500

Source: Bloomberg, NHKSI Research

JCI Index

Support	5900	Resistance	6260
---------	------	------------	------



Source: NHKSI Research, Bloomberg

NH KSI Stocks Coverage

	Last Price	End of Last Year Price	Target Price*	Rating	Upside Potential (%)	1 Year Change (%)	Market Cap (IDR tn)	Price / EPS (TTM)	Price / BVPS	Return on Equity (%)	Dividend Yield TTM (%)	Sales Growth Yoy (%)	EPS Growth Yoy (%)	Adj. Beta
Finance							2,802.6							
BBCA	32,550	33,850	36,200	Overweight	11.2	(1.4)	802.5	27.3x	4.3x	16.5	1.6	(0.1)	18.1	1.0
BBRI	3,840	4,170	5,100	Buy	32.8	3.8	473.6	22.4x	2.4x	11.0	2.6	6.4	22.8	1.3
BBNI	5,300	6,175	6,050	Overweight	14.2	-	98.8	25.6x	0.8x	3.4	0.8	(5.7)	12.8	1.5
BMRI	5,800	6,325	7,450	Buy	28.4	(7.9)	270.7	14.0x	1.4x	10.5	3.8	8.0	21.5	1.3
Consumer Non-Cyclicals							991.9							
GGRM	31,975	41,000	34,200	Overweight	7.0	(38.4)	61.5	10.0x	1.0x	10.6	8.1	12.9	(39.5)	1.0
ICBP	8,300	9,575	11,300	Buy	36.1	(19.8)	96.8	15.1x	2.9x	20.9	2.6	22.4	(4.8)	0.7
INDF	6,425	6,850	8,000	Buy	24.5	(16.3)	56.4	8.0x	1.2x	16.3	4.3	20.1	20.7	0.8
MYOR	2,200	2,710	2,700	Buy	22.7	(8.3)	49.2	23.9x	4.1x	18.2	2.4	18.7	0.0	0.8
HMSP	950	1,505	1,300	Buy	36.8	(43.6)	110.5	14.2x	4.3x	29.8	7.7	6.5	(14.3)	1.0
UNVR	4,030	7,350	5,500	Buy	36.5	(51.2)	153.7	23.3x	38.3x	102.8	4.6	(7.3)	(15.8)	0.8
CPIN	6,525	6,525	6,675	Hold	2.3	4.4	107.0	21.3x	4.1x	20.6	1.7	28.8	73.0	1.3
AALI	8,350	12,325	12,000	Buy	43.7	(16.7)	16.1	14.7x	0.8x	5.7	2.3	19.3	65.7	1.4
LSIP	1,085	1,375	1,380	Buy	27.2	12.4	7.4	6.7x	0.8x	12.0	1.4	39.0	461.5	1.5
Consumer Cyclicals							327.7							
ERAA	555	440	800	Buy	44.1	63.7	8.9	8.4x	1.5x	19.9	2.5	47.6	386.1	1.2
MAPI	690	790	825	Buy	19.6	0.7	11.5	85.9x	2.0x	2.3	N/A	33.9	N/A	1.2
ACES	1,380	1,715	1,600	Buy	15.9	(14.3)	23.7	36.3x	4.8x	13.1	2.3	(7.0)	(23.6)	1.0
SCMA	1,915	2,290	2,050	Overweight	7.0	57.0	28.3	19.7x	6.0x	28.1	N/A	24.8	39.9	1.2
Healthcare							235.1							
KLBF	1,365	1,480	1,750	Buy	28.2	(15.5)	64.0	22.5x	3.6x	16.6	4.1	6.6	7.9	0.9
SIDO	800	805	930	Buy	16.3	13.9	24.0	23.3x	7.5x	32.8	4.3	13.4	21.3	0.7
MIKA	2,290	2,730	3,250	Buy	41.9	(3.8)	32.6	27.8x	5.9x	23.8	1.6	65.8	115.0	0.3
Infrastructure							721.58							
TLKM	3,320	3,269	4,400	Buy	32.5	12.4	328.9	15.7x	3.0x	19.5	5.1	(0.7)	2.6	1.0
ISAT	6,350	5,050	6,400	Hold	0.8	161.3	34.5	6.6x	2.0x	34.9	N/A	11.4	N/A	1.4
JSMR	3,770	4,630	5,100	Buy	35.3	(4.3)	27.4	21.9x	1.4x	6.5	N/A	1.6	709.1	1.3
EXCL	2,650	2,730	3,150	Buy	18.9	4.3	28.4	N/A	1.4x	(3.3)	1.2	(0.8)	(58.9)	1.1
TOWR	1,300	960	1,520	Buy	16.9	25.0	66.3	20.1x	6.1x	32.6	2.2	7.8	30.8	0.9
TBIG	2,920	1,630	3,240	Overweight	11.0	133.6	66.2	58.6x	6.8x	15.2	1.1	12.7	11.1	0.7
WIKA	915	1,985	1,390	Buy	51.9	(28.0)	8.2	49.8x	0.6x	1.2	N/A	(6.5)	(21.2)	1.8
PTPP	870	1,865	1,220	Buy	40.2	(13.4)	5.4	35.3x	0.5x	1.4	N/A	(16.7)	50.0	1.9

Source : Bloomberg, NH KSI Research

NH KSI Stocks Coverage

	Last Price	End of Last Year Price	Target Price*	Rating	Upside Potential (%)	1 Year Change (%)	Market Cap (IDR tn)	Price / EPS (TTM)	Price / BVPS	Return on Equity (%)	Dividend Yield TTM (%)	Sales Growth Yoy (%)	EPS Growth Yoy (%)	Adj. Beta
Property & Real Estate							254.6							
CTRA	835	985	1,320	Buy	58.1	8.4	15.5	9.5x	1.0x	10.7	1.0	43.4	188.9	1.4
BSDE	910	1,225	1,345	Buy	47.8	16.7	19.3	18.2x	0.6x	3.5	N/A	39.2	N/A	1.4
PWON	436	510	585	Buy	34.2	4.3	21.0	23.0x	1.4x	6.2	N/A	24.6	(3.7)	1.5
Energy							353.7							
PGAS	1,010	1,655	2,030	Buy	101.0	(23.2)	24.5	N/A	0.7x	(10.3)	N/A	(16.1)	28.9	1.7
PTBA	2,080	2,810	2,250	Overweight	8.2	(2.3)	24.0	11.7x	1.3x	10.7	3.6	(22.0)	(44.4)	1.1
ITMG	15,250	13,850	16,250	Overweight	6.6	79.4	17.2	9.0x	1.3x	14.3	3.1	3.6	266.7	1.2
ADRO	1,245	1,430	1,580	Buy	26.9	10.7	39.8	22.9x	0.7x	3.2	5.3	(7.8)	(27.0)	1.4
Industrial							347.0							
UNTR	19,475	26,600	25,500	Buy	30.9	(17.2)	72.6	11.3x	1.1x	10.5	3.3	12.4	11.2	0.9
ASII	5,050	6,025	6,000	Buy	18.8	(4.7)	204.4	15.0x	1.3x	8.6	2.3	19.6	(22.4)	1.2
Basic Ind.							759.2							
SMGR	8,850	12,425	12,275	Buy	38.7	(17.1)	52.5	17.6x	1.6x	8.9	2.1	1.2	30.1	1.3
INTP	11,100	14,475	14,225	Buy	28.2	(9.0)	40.9	21.3x	1.8x	8.3	6.5	8.0	24.8	1.2
INCO	4,960	5,100	5,500	Overweight	10.9	29.5	49.3	38.6x	1.7x	4.4	1.0	15.1	18.0	1.6
ANTM	2,260	1,935	3,270	Buy	44.7	184.3	54.3	26.3x	2.7x	10.9	0.7	77.0	N/A	1.8

Source : Bloomberg, NH KSI Research

Economic Calendar

Date	Country	Hour JKT	Event	Period	Consensus	Previous
Monday, 30-Aug.	EC	16:00	Consumer Confidence	Aug	--	-5.3
	GE	19:00	CPI MoM	Aug	-0.10%	0.90%
	GE	19:00	CPI YoY	Aug	3.80%	3.80%
	US	21:00	Pending Home Sales MoM	Jul	0.40%	-1.90%
Tuesday, 31-Aug.	CH	08:00	Non-Manufacturing PMI	Aug	52.0	53.3
	CH	08:00	Manufacturing PMI	Aug	50.1	50.4
	UK	15:30	Mortgage Approvals	Jul	--	81.3k
	EC	16:00	CPI MoM	Aug	0.00%	-0.10%
Wednesday, 1-Sept.	ID	07:30	Markit Indonesia PMI Mfg	Aug	--	40.1
	ID	11:00	CPI YoY	Aug	1.60%	1.52%
	US	18:00	MBA Mortgage Applications	Aug	--	1.60%
	US	21:00	ISM Manufacturing	Aug	58.7	59.5
Thursday, 2-Sept.	US	19:30	Initial Jobless Claims	Aug	--	353k
	US	19:30	Trade Balance	Jul	-USD 74.5 Bn	-USD 75.7 Bn
	US	21:00	Factory Orders	Jul	0.30%	1.50%
	US	21:00	Durable Goods Orders	Jul	--	-0.10%
Friday, 3-Sept.	EC	15:00	Markit Eurozone Composite PMI	Aug	59.5	59.5
	US	19:30	Change in Nonfarm Payrolls	Aug	787k	943k
	US	19:30	Unemployment Rate	Aug	5.20%	5.40%
	US	21:00	ISM Services Index	Aug	62.0	64.1

Source: Bloomberg, NHKSI Research

Corporate Action Calendar

Date	Event	Company
Monday, 30-Aug	RUPS	VRNA, SRAJ, SOFA, SMRU, SINI, SHID, PRIM, PMMP, PJAA, PANI, MMLP, INDR, HDTX, GWSA, GSMF, FITT, ENRG, DWGL, DKFT, BAPI, AISA
	Cum Dividend	BALI
Tuesday, 31-Aug.	RUPS	TEBE, STTP, SSTM, ROCK, PSKT, POLU, POLL, POLI, PLAN, PGUN, OKAS, MNCN, LCGP, KPAS, KJEN, KEEN, JKSW, INCO, INAI, HOPE, HDIT, ERTX, ENZO, DNET, DART, BUMI, BPII, BOSS, BMTR, BMAS, BCIP, AYLS, ARTI, ALMI
	Cum Dividend	--
Wednesday, 1-Sept.	RUPS	UNVR, JAYA, ELTY
	Cum Dividend	DLTA
Thursday, 2-Sept.	RUPS	WIKA, LEAD, FLMC
	Cum Dividend	--
Friday, 3-Sept.	RUPS	WIFI, TRUK, SIDO, POOL, NOBU, BINA
	Cum Dividend	--

Source: NHKSI Research

PT NH Korindo Sekuritas Indonesia

Member of Indonesia Stock Exchange

Head of Research

Anggaraksa Arismunandar

Market Strategy, Economy, Misc. Industry

T +62 21 5088 9134 ext. 9134

E anggaraksa@nhsec.co.id

Senior Technical Analyst

Dimas Wahyu Putra P

Technical

T +62 21 5088 ext 9128

E dimas.wahyu@nhsec.co.id

Economist

Arief Machrus

Banking, Fixed Income

T +62 21 5088 ext 9127

E arief.machrus@nhsec.co.id

Analyst

Ajeng Kartika Hapsari

Property, Construction

T +62 21 5088 ext 9130

E ajeng@nhsec.co.id

Analyst

Putu Chantika Putri D

Consumer, Retail

T +62 21 5088 ext 9129

E putu.chantika@nhsec.co.id

Research Support

Jasmine Kusumawardani

T +62 21 5088 ext 9132

E jasmine.kusumawardani@nhsec.co.id

DISCLAIMER

This report and any electronic access hereto are restricted and intended only for the clients and related entities of PT NH Korindo Sekuritas Indonesia. This report is only for information and recipient use. It is not reproduced, copied, or made available for others. Under no circumstances is it considered as a selling offer or solicitation of securities buying. Any recommendation contained herein may not be suitable for all investors. Although the information hereof is obtained from reliable sources, its accuracy and completeness cannot be guaranteed. PT NH Korindo Sekuritas Indonesia, its affiliated companies, employees, and agents are held harmless from any responsibility and liability for claims, proceedings, action, losses, expenses, damages, or costs filed against or suffered by any person as a result of acting pursuant to the contents hereof. Neither is PT NH Korindo Sekuritas Indonesia, its affiliated companies, employees, nor agents are liable for errors, omissions, misstatements, negligence, inaccuracy contained herein.

All rights reserved by PT NH Korindo Sekuritas Indonesia

PT NH Korindo Sekuritas Indonesia

Member of Indonesia Stock Exchange

Head Office :

District 8 Treasury Tower 51st Fl. Unit A,
SCBD Lot.28
Jl. Jendral Sudirman Kav. 52-53 Jakarta
Selatan 12190
Telp : +62 21 50889100
Fax : +62 21 50889101

Branch Office BSD:

ITC BSD Blok R No.48
Jl. Pahlawan Seribu Serpong
Tangerang Selatan 15322
Indonesia
Telp : +62 21 5316 2049
Fax : +62 21 5316 1687

Branch Office Medan:

Jl. Timor No. 147
Medan
Sumatera Utara 20234
Indonesia
Telp : +62 61 4156500
Fax : +62 61 4568560

Branch Office Semarang:

Jl. MH Thamrin No. 152
Semarang
Jawa Tengah 50314
Indonesia
Telp : +62 24 8446878
Fax : +62 24 8446879

Branch Office Jakarta Utara:

Jl. Bandengan Utara Kav. 81
Blok A No.02, Lt 1
Jakarta Utara 14440
Indonesia
Telp : +62 21 6667 4959
Fax : +62 21 6667 4960

Branch Office Pekanbaru:

Sudirman City Square
Jl. Jend. Sudirman Blok A No.7
Pekanbaru
Indonesia
Telp : +62 761 801 133

Branch Office Surabaya:

Spazio Tower Lt. 10, Unit S05
Jl. Mayjen Yono Suwoyo
Surabaya 60226
Indonesia
Telp : +62 31 9914 1344

Branch Office Makassar:

Jl. Gunung Latimojong No.120A
Makassar
Indonesia
Telp : +62 411 361 5255

Branch Office Bandung:

Paskal Hypersquare Blok A1
Jl. Pasirkaliki No 25-27
Bandung 40181
Indonesia
Telp : +62 22 8606 1012

Branch Office Denpasar:

Ruko Griya Alamanda No.9
Jl. Cok Agung Tresna
Denpasar
Indonesia