

Laporan Mingguan (Feb 01 – 05)

Summary:

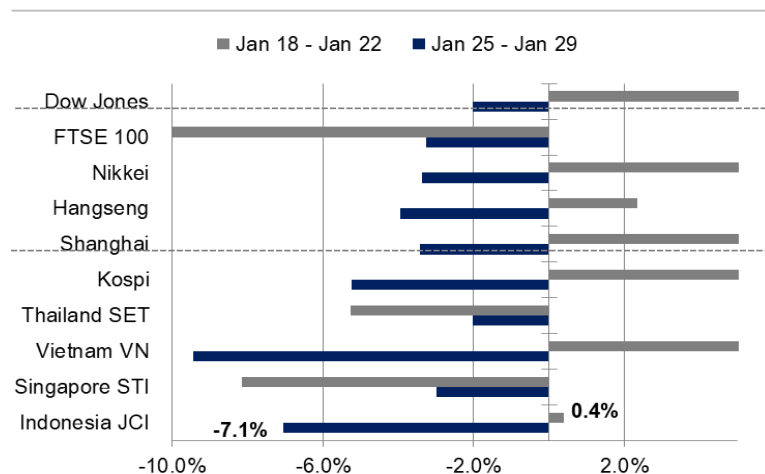
Last week review: Laju pergerakan IHSG dipengaruhi sentimen dari domestik seperti keputusan pemerintah untuk memperpanjang PPKM dan global seperti keputusan the Fed untuk tetap mempertahankan suku bunga acuan, rilisnya data PDB AS di kuartal IV yang tercatat tumbuh melambat. Selama sepekan lalu, IHSG masih melanjutkan pelemahannya dan ditutup di zona merah.

This week's outlook: Memasuki bulan Februari 2021, bursa saham akan mencari sentimen positif dari rilis data-data ekonomi domestik. Pada awal pekan, rilis inflasi periode Januari diperkirakan akan bertahan pada level 1,68%. Investor juga berharap data PMI Manufaktur masih akan bertahan di area ekspansi. Menjelang akhir pekan, data Cadangan Devisa dan GDP tahun 2020 akan menjadi katalis penggerak IHSG.

JCI Index	: 5,862.35 (-7.1%)
Foreign Flow	: Net sell of IDR369 billion (vs. last week's net buy of IDR746 billion)
USD/IDR	: 14,050 (+0.11%)

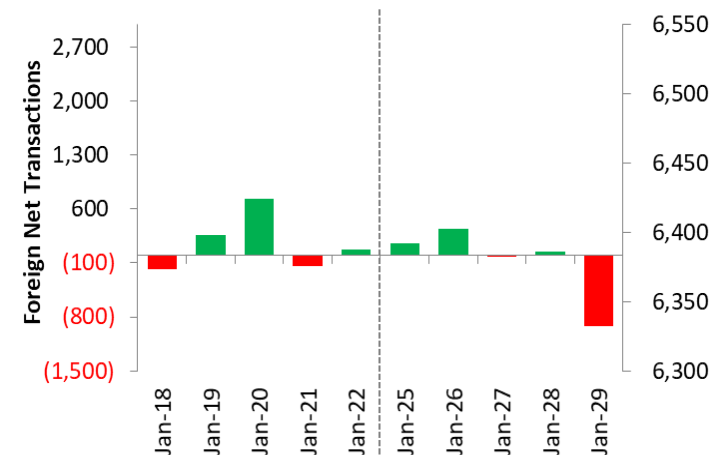
Last Week's JCI Movement

Global Market Movement



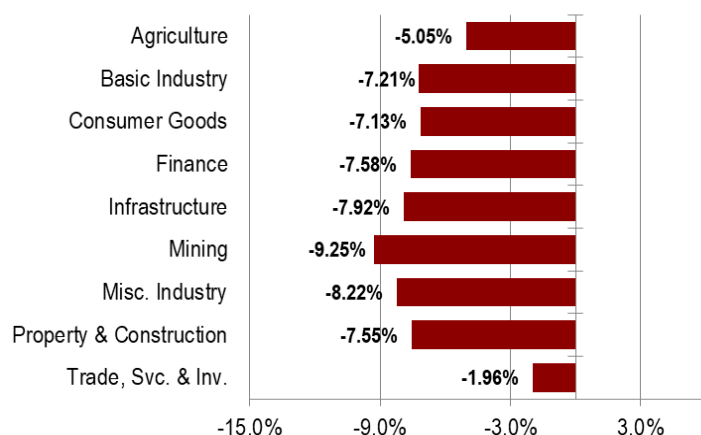
Source: Bloomberg, NHKSI Research

Foreign Net Flow – Last 10 Days



Source: Bloomberg, NHKSI Research

JCI Sector Movement



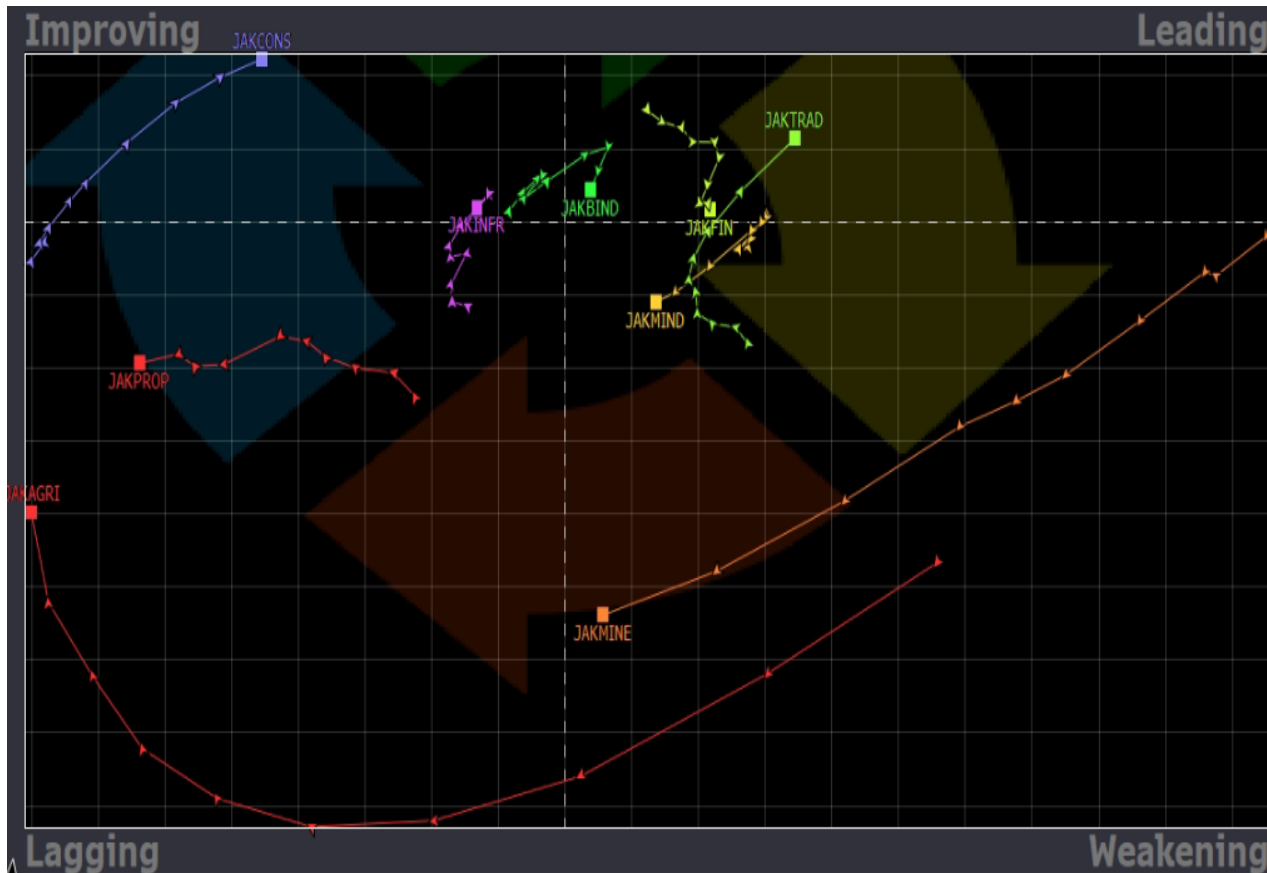
Source: Bloomberg, NHKSI Research

JCI's Top Foreign Transaction

Top Buy (RG)	NB Val.	Top Sell (RG)	NS Val.
ASII	135,535	BBCA	-464,323
INCO	113,806	BBRI	-152,399
INKP	104,749	TBIG	-138,445
MDKA	96,487	ICBP	-128,126
MNCN	83,831	BBNI	-115,526

Source: Bloomberg, NHKSI Research

Outlook This Week



Sector : Financials
(Lagging → Improving)

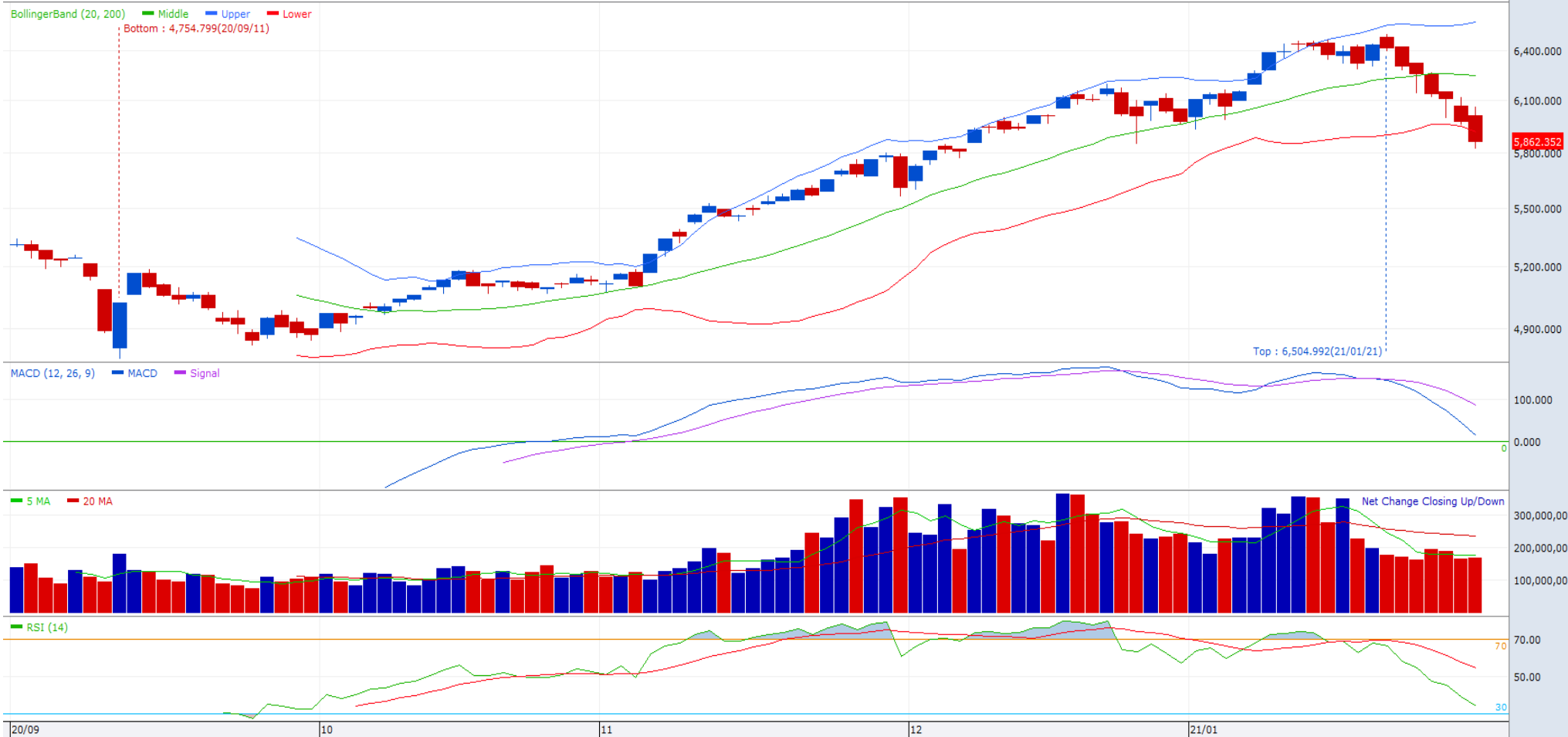
Top Picks : MYOR (TP:2900; CL:2750)
ACES (TP:1750; CL:1550)
ERAA (TP:3400; CL:2560)

Source: Bloomberg, NHKSI Research

JCI Index

Close	5,862	Upper Limit	6575.917	Lower Limit	5918.788	MACD	14.675
Signal	87.377	RSI	34.48	Signal	54.56	Support	5825
Resistance	6200						

Last : 5,862.352 ▼ 117.035(1.96%) Volume : 168,490,809



Source: NHKSI Research, Bloomberg

Kalender Ekonomi

Date	Country	Hour JKT	Event	Period	Consensus	Previous
Monday, 01-Feb	ID	07:30	Markit Indonesia PMI Mfg	Jan	--	51.3
	ID	11:00	CPI YoY	Jan	1.68%	1.68%
	EC	16:00	Markit Eurozone Manufacturing PMI	Jan	54.7	54.7
	UK	16:30	Markit UK PMI Manufacturing SA	Jan	--	52.9
	US	21:45	Markit US Manufacturing PMI	Jan	59.1	59.1
Tuesday, 02-Feb	UK	14:00	Nationwide House Px NSA YoY	Jan	6.90%	7.30%
	EC	17:00	GDP SA YoY	4Q20	-6.10%	-4.30%
Wednesday, 03-Feb	US	19:00	MBA Mortgage Applications	Jan	--	-4.10%
Thursday, 04-Feb	UK	19:00	Bank of England Bank Rate	Feb	0.10%	0.10%
	US	20:30	Initial Jobless Claims	Jan	--	847k
	US	22:00	Durable Goods Orders	Dec	--	0.20%
Friday, 05-Feb	ID	10:00	Foreign Reserves	Jan	--	\$135.90b
	ID	11:00	GDP YoY	4Q20	-2.00%	-3.49%
	GE	14:00	Factory Orders MoM	Dec	-2.00%	2.30%
	US	20:30	Trade Balance	Dec	-\$66.0b	-\$68.1b

Source: Bloomberg, NHKSI Research

Kalender Aksi Korporasi

Date	Event	Company
Monday, 01-Feb	IPO	UFOE, BANK
Tuesday, 02-Feb	IPO	WMUU
Wednesday, 03-Feb	RUPS	BABP
Thursday, 04-Feb	RUPS	ASRM

Source: NHKSI Research

INNI Index's Stocks List

	Last Price	End of Last Year Price	Target Price*	Rating	Upside Potential (%)	1 Year Change (%)	Market Cap (IDR tn)	Price / EPS (TTM)	Price / BVPS	Return on Equity (%)	Dividend Yield TTM (%)	Sales Growth Yoy (%)	EPS Growth Yoy (%)	Adj. Beta
Finance						(2.0)	2,545.0							
BBCA	33,800	33,850	34,000	Hold	0.6	(0.4)	833.3	30.1x	4.7x	16.0	1.6	3.4	(4.2)	1.1
BBRI	4,180	4,170	4,500	Overweight	7.7	(9.5)	515.5	27.6x	2.7x	12.2	4.0	N/A	(46.0)	1.3
BBNI	5,550	6,175	6,000	Overweight	8.1	(24.5)	103.5	13.4x	0.9x	6.7	3.7	(2.4)	(63.9)	1.4
BMRI	6,575	6,325	7,000	Overweight	6.5	(15.7)	306.8	17.9x	1.7x	11.1	5.4	N/A	(37.7)	1.3
Consumer						(17.2)	1,001.6							
GGRM	37,725	41,000	49,000	Buy	29.9	(33.6)	72.6	7.8x	1.3x	17.9	N/A	2.0	(22.0)	0.9
ICBP	9,100	9,575	12,150	Buy	33.5	(22.2)	106.1	20.7x	3.9x	20.1	2.4	3.4	2.1	0.7
INDF	6,050	6,850	8,000	Buy	32.2	(23.7)	53.1	10.4x	1.3x	13.5	4.6	1.6	6.2	0.9
KLBF	1,465	1,480	1,750	Buy	19.5	(3.9)	68.7	26.2x	4.0x	16.2	1.8	1.6	5.8	0.9
SIDO	730	805	930	Buy	27.4	21.7	21.9	28.7x	6.6x	26.9	3.6	6.0	10.8	0.8
MYOR	2,790	2,710	2,700	Hold	(3.2)	44.9	62.4	25.4x	5.9x	25.3	1.1	(2.1)	42.9	0.8
HMSP	1,310	1,505	1,750	Buy	33.6	(39.6)	152.4	14.5x	5.3x	34.4	9.1	(12.6)	(33.0)	0.9
UNVR	6,925	7,350	8,600	Buy	24.2	(16.1)	264.2	36.1x	40.7x	109.5	2.8	0.3	(1.0)	0.8
Infrastructure						(10.3)	696.18							
TLKM	3,110	3,310	3,800	Buy	22.2	(19.2)	308.1	16.3x	3.0x	18.8	5.0	(2.6)	1.3	1.1
ISAT	5,025	5,050	5,130	Hold	2.1	115.7	27.3	19.6x	2.2x	12.0	N/A	9.2	(60.8)	1.5
JSMR	4,320	4,630	5,100	Buy	18.1	(11.8)	31.4	36.4x	1.7x	4.7	0.4	(50.1)	(89.5)	1.3
EXCL	2,220	2,730	3,350	Buy	50.9	(26.2)	23.8	10.4x	1.1x	11.5	0.9	5.0	312.8	1.2
TOWR	960	960	1,310	Buy	36.5	13.6	49.0	18.1x	5.0x	29.5	2.5	19.3	22.6	0.9
PGAS	1,345	1,655	1,400	Hold	4.1	(25.1)	32.6	N/A	0.9x	(0.3)	3.1	(23.5)	(58.7)	1.7
TBIG	2,240	1,630	1,565	Sell	(30.1)	88.2	50.8	48.9x	8.1x	20.0	1.3	13.5	22.3	0.9
Trade						9.2	713.5							
UNTR	22,850	26,600	19,000	Sell	(16.8)	14.1	85.2	10.6x	1.4x	13.7	4.3	(29.2)	(38.2)	0.9
MAPI	770	790	870	Overweight	13.0	(23.0)	12.8	N/A	2.4x	(5.6)	N/A	(34.0)	N/A	1.3
ACES	1,560	1,715	1,900	Buy	21.8	(2.2)	26.8	26.5x	5.5x	17.9	1.2	(8.3)	(26.7)	0.9
MIKA	2,900	2,730	2,810	Hold	(3.1)	11.1	41.3	55.8x	9.2x	16.7	0.7	(2.8)	0.0	0.3
Property						(21.6)	353.2							
CTRA	900	985	1,160	Buy	28.9	(4.8)	16.7	16.9x	1.1x	6.7	0.9	(8.9)	(40.9)	1.5
BSDE	1,125	1,225	1,575	Buy	40.0	(3.4)	23.8	23.8x	0.8x	3.3	N/A	(18.2)	(80.3)	1.5
WIKI	1,800	1,985	2,180	Buy	21.1	(9.3)	16.1	16.5x	1.2x	6.7	2.8	(43.3)	(96.3)	1.8
PTPP	1,635	1,865	1,940	Buy	18.7	13.9	10.1	24.6x	0.9x	3.4	2.1	(37.0)	(95.2)	1.9
PWON	482	510	615	Buy	27.6	(11.6)	23.2	19.8x	1.6x	8.1	N/A	(41.9)	(72.1)	1.5
Basic Ind.						0.5	745.7							
SMGR	10,600	12,425	13,325	Buy	25.7	(13.8)	62.9	23.8x	1.9x	8.1	0.4	(8.9)	19.3	1.3
INTP	13,375	14,475	18,775	Buy	40.4	(25.0)	49.2	27.7x	2.2x	7.9	5.4	(10.6)	(5.0)	1.3
CPIN	5,750	6,525	6,675	Buy	16.1	(13.9)	94.3	28.2x	4.3x	15.9	1.4	(1.4)	(10.9)	1.4
Misc Ind.						(9.8)	333.4							
ASII	6,100	6,025	5,800	Hold	(4.9)	(10.6)	246.9	12.4x	1.6x	13.4	3.0	(26.4)	(11.5)	1.3
Mining						31.4	439.2							
TINS	1,690	1,485	1,200	Sell	(29.0)	128.4	12.6	N/A	2.6x	(19.7)	N/A	(18.7)	(43.0)	1.7
PTBA	2,580	2,810	3,030	Buy	17.4	10.7	29.7	10.8x	1.8x	16.0	12.7	(20.9)	(44.6)	1.2
INCO	5,500	5,100	4,530	Sell	(17.6)	67.7	54.6	29.1x	1.9x	6.9	N/A	12.7	N/A	1.6
ANTM	2,220	1,935	1,480	Sell	(33.3)	196.0	53.3	113.9x	2.8x	2.4	0.1	(26.5)	30.3	1.8
ITMG	12,250	13,850	12,000	Hold	(2.0)	12.4	13.8	14.0x	1.1x	7.6	7.2	(33.2)	(55.6)	1.2
ADRO	1,200	1,430	1,700	Buy	41.7	(8.0)	38.4	25.4x	0.7x	2.9	9.1	(26.4)	(73.0)	1.4
MEDC	650	590	1,100	Buy	69.2	8.1	16.3	N/A	1.0x	(14.6)	N/A	(18.3)	N/A	1.7
Agriculture						2.5	93.9							
AALI	11,175	12,325	14,200	Buy	27.1	(5.3)	21.5	31.5x	1.1x	3.6	0.8	7.6	423.9	1.4
LSIP	1,335	1,375	1,200	Underweight	(10.1)	10.8	9.1	19.0x	1.1x	5.7	1.1	(11.9)	412.5	1.6

Source : Bloomberg, NHKSI Research

PT NH Korindo Sekuritas Indonesia

Member of Indonesia Stock Exchange

Head of Research

Anggaraksa Arismunandar

Market Strategy, Economy, Misc. Industry

T +62 21 5088 9134 ext. 9134

E anggaraksa@nhsec.co.id

Analyst

Ajeng Kartika Hapsari

Property, Construction

T +62 21 5088 ext 9130

E ajeng@nhsec.co.id

Analyst

Arief Machrus

Banking, Fixed Income

T +62 21 5088 ext 9127

E arief.machrus@nhsec.co.id

Analyst

Meilki Riyanto Darmawan S

Mining, Plantation

T +62 21 5088 ext 9128

E meilki.darmawan@nhsec.co.id

Analyst

Putu Chantika Putri D

Consumer, Retail

T +62 21 5088 ext 9129

E putu.chantika@nhsec.co.id

Analyst

Restu Pamungkas

Telco, Tower, Toll road

T +62 21 5088 ext 9133

E restu.pamungkas@nhsec.co.id

Research Support

Jasmine Kusumawardani

T +62 21 5088 ext 9132

E jasmine.kusumawardani@nhsec.co.id

Head Office :

District 8 Treasury Tower 51st Fl.

Unit A, SCBD Lot.28

Jl. Jendral Sudirman Kav. 52-53 J

akarta Selatan 12190

Telp : +62 21 50889100

Fax : +62 21 50889101

Branch Office BSD:

ITC BSD Blok R No.48

Jl. Pahlawan Seribu Serpong

Tangerang Selatan 15322

Indonesia

Telp : +62 21 5316 2049

Fax : +62 21 5316 1687

Branch Office Medan:

Jl. Timor No. 147

Medan

Sumatera Utara 20234

Indonesia

Telp : +62 61 4156500

Fax : +62 61 4568560

Branch Office Semarang:

Jl. MH Thamrin No. 152

Semarang

Jawa Tengah 50314

Indonesia

Telp : +62 24 8446878

Fax : +62 24 8446879

DISCLAIMER

This report and any electronic access hereto are restricted and intended only for the clients and related entities of PT NH Korindo Sekuritas Indonesia. This report is only for information and recipient use. It is not reproduced, copied, or made available for others. Under no circumstances is it considered as a selling offer or solicitation of securities buying. Any recommendation contained herein may not be suitable for all investors. Although the information hereof is obtained from reliable sources, its accuracy and completeness cannot be guaranteed. PT NH Korindo Sekuritas Indonesia, its affiliated companies, employees, and agents are held harmless from any responsibility and liability for claims, proceedings, action, losses, expenses, damages, or costs filed against or suffered by any person as a result of acting pursuant to the contents hereof. Neither is PT NH Korindo Sekuritas Indonesia, its affiliated companies, employees, nor agents are liable for errors, omissions, misstatements, negligence, inaccuracy contained herein.